

Supersedes copies dated  
16 December 1977 and  
13 July 1970, see table  
of contents page for details

**TECHNICAL MANUAL**

**DIRECT SUPPORT AND GENERAL SUPPORT**

**MAINTENANCE REPAIR PARTS AND**

**SPECIAL TOOLS LIST**

**(INCLUDING DEPOT MAINTENANCE REPAIR PARTS)**

**FOR**

**TANK PERISCOPE:**

**M32 (1240-00-766-4287)**

**M32C (1240-00-762-9335)**

**M32E1 (1240-01-016-2272)**

**M32CE1 (1240-01-092-7910)**

---

**HEADQUARTERS, DEPARTMENT OF THE ARMY**

**SEPTEMBER 1986**



Technical Manual  
No. 9-1240-379-34P

HEADQUARTERS  
DEPARTMENT OF THE ARMY  
Washington, D.C., 18 September 1986

DIRECT SUPPORT AND GENERAL SUPPORT MAINTENANCE  
REPAIR PARTS AND SPECIAL TOOLS LIST  
(INCLUDING DEPOT MAINTENANCE REPAIR PARTS)

FOR

TANK PERISCOPE

- M32 (1240-00-766-4287)
- M32C (1240-00-762-9335)
- M32E1 (1240-01-016-2272)
- M32CE1 (1240-01-092-7910)

Current as of 26 June 1986

REPORTING ERRORS AND RECOMMENDING IMPROVEMENTS

You can help improve this manual. If you find any mistakes or if you know of a way to improve the procedures, please let us know. Mail your letter, DA Form 2028 (Recommended Changes to Publications and Blank Forms), or DA Form 2028-2 located in back of this manual direct to: Commander, US Army Armament, Munitions and Chemical Command, ATTN: AMSMC-MAS, Rock Island, IL 61299-6000. A reply will be furnished to you.

TABLE OF CONTENTS

	Page	Illus/ Figure
Section I. INTRODUCTION . . . . .	1	
Section II. REPAIR PARTS LIST . . . . .	1-1	
Group 00 Tank Periscope M32 10514284, M32C 10516600, M32E1 11747400, and M32CE1 11747440 . . . . .	1-1	1
Group 01 Head Assembly 11727486, 10541990, 11747439 (Partial View-Back) . . . . .	2-1	2
Group 01 Head-Assembly 11727486, 10541990, 11747439 (Partial View-Front) . . . . .	3-1	3
Group 02 Body Assembly (Daylight) 11747350, 10516576 . . . . .	4-1	4
0201 Optical Cell Assembly 8289278 . . . . .	4-1	4
0202 Optical Cell Assembly 8289217 . . . . .	5-1	5

---

\*This manual supersedes TM 9-1240-379-34P dated 16 December 1977, and TM 9-1240-313-35P, dated 13 July 1970.

TABLE OF CONTENTS - Continued

			Page	Illus / Figure
Section	II.	REPAIR PARTS LIST - Continued		
		0203 Optical Cell Assembly 10516366		
		and 8289218 . . . . .	6 - 1	6
Group	03	Body Assembly (Infrared) 11743800 . . . . .	7 - 1	7
Group	03	Body Assembly (Infrared) 11743800 (Partial View-Top) . . . . .	8 - 1	8
Group	03	Body Assembly (Infrared) 11743800 (Partial View-Bottom) . . . . .	9 - 1	9
Group	03	Body Assembly (Infrared) 11743800 (Partial View-Back) . . . . .	10 - 1	10
		0301 Optical Cell Assembly 10548202	11 - 1	11
		0302 Eyepiece Assembly 10516734 . . . . .	12 - 1	12
		0303 or 0405 Reticle Assembly 11727426 . . . . .	13 - 1	13
Group	04	Elbow Assembly (Passive) 11733401 . . . . .	14 - 1	14
		0403 Adapter Assembly 11733480 . . . . .	14 - 1	14
Group	04	Elbow Assembly (Passive) 11733401 (Partial View-Top) . . . . .	15 - 1	15
Group	04	Elbow Assembly (Passive) 11733401 (Partial View-Bottom) . . . . .	16 - 1	16
Group	04	Elbow Assembly (Passive) 11733401 (Partial View-Back) . . . . .	17 - 1	17
		0401 Prism Cell 11733403 . . . . .	18 - 1	18
		0402 Eyepiece Assembly 11733402 . . . . .	19 - 1	19
		0404 Switch Assembly 11747182 . . . . .	20 - 1	20
Group	99	Bulk Materials . . . . .	BULK - 1	
Section	III.	SPECIAL TOOLS LIST (not applicable) . . . . .		
Section	IV.	NATIONAL STOCK NUMBER AND PART NUMBER INDEX . . . . .	I - 1	

DIRECT SUPPORT AND  
GENERAL SUPPORT MAINTENANCE  
REPAIR PARTS AND SPECIAL TOOLS LIST  
(including depot maintenance repair parts)

SECTION I. INTRODUCTION

1. Scope. This RPSTL lists and authorizes spares and repair parts; special tools; special test, measurement, and diagnostic equipment (TMDE); and other special support equipment required for performance of direct support and general support maintenance of the M32 Series Tank Periscopes. It authorizes the requisitioning, issue, and disposition of spares, repair parts and special tools as indicated by the Source, Maintenance and Recoverability (SMR) codes.

2. General. In addition to this section, Introduction, this Repair Parts and Special Tools List is divided into the following sections:

a. Section II. Repair Parts List. A list of spares and repair parts authorized by this RPSTL for use in the performance of maintenance. The list also includes parts which must be removed for replacement of the authorized parts. Parts lists are composed of functional groups in ascending alphanumeric sequence, with the parts in each group listed in ascending figure and item number sequence. Bulk materials are listed in item name sequence. Repair parts kits are listed separately in their own functional group within Section II. Repair parts for repairable special tools are also listed in this section. Items listed are shown on the associated illustration(s)/figure(s).

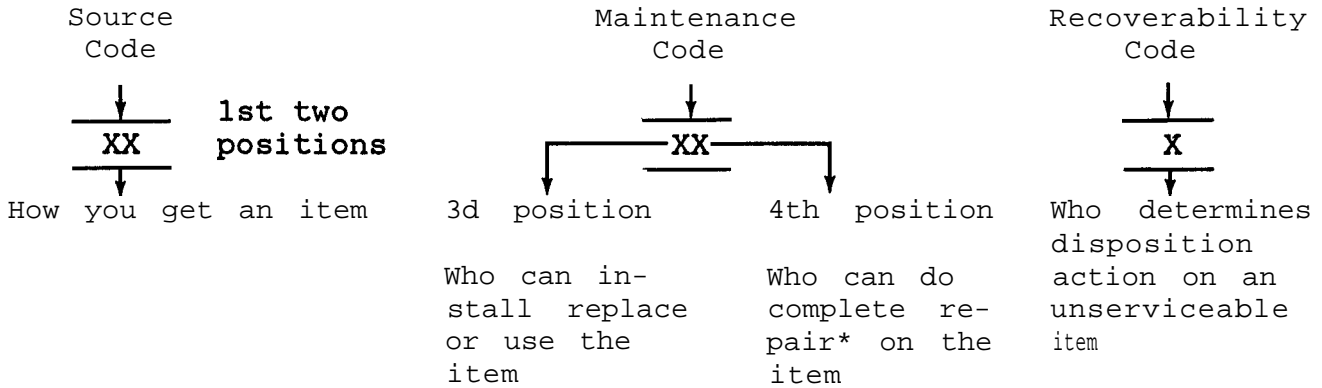
b. Section III. Special Tools List. A list of special tools, special TMDE, and other special support equipment authorized by this RPSTL (as indicated by Basis of Issue (BOI) information in DESCRIPTION AND USABLE ON CODE column) for the performance of maintenance.

c. Section IV. National Stock Number and Part Number Index. A list, in National Item Identification Number (NIIN) sequence, of all National stock numbered items appearing in the listing, followed by a list in alphanumeric sequence of all part numbers appearing in the listing. National stock numbers and part numbers are cross-referenced to each illustration figure and item number appearance.

3. Explanation of Columns (Section II and III).

a. ITEM NO. (Column (1)). Indicates the number used to identify items called out in the illustration.

b. SMR CODE (Column (2)). The Source, Maintenance, and Recoverability (SMR) Code is a 5-position code containing supply/requisitioning information, maintenance category authorization criteria, and disposition instruction, as shown in the following breakout:



\*Complete Repair: Maintenance capacity, capability, and authority to perform all corrective maintenance tasks of the "Repair" function in a use/user environment in order to restore serviceability to a failed item.

(1) Source Code. The source code tells you how to get an item needed for maintenance, repair, or overhaul of an end item/equipment. Explanations of source codes follows:

Code	Explanation
<p>PA PB PC** PD PE PF PG</p>	<p>Stocked items; use the applicable NSN to request/requisition items with these source codes. They are authorized to the category indicated by the code entered in the 3d position of the SMR codes.</p> <p>**NOTE: Items coded PC are subject to deterioration.</p>
<p>KD KF KB</p>	<p>Items with these codes are not to be requested/requisitioned individually. They are part of a kit which is authorized to the maintenance category indicated in the 3d position of the SMR code. The complete kit must be requisitioned and applied.</p>
<p>MO - (Made at org/ AVUM Level) MF - (Made at DS/ AVIM Level) MH - (Made at GS Level) ML - (Made at Spe- cialized Repair Act (SRA)) MD - (Made at Depot)</p>	<p>Items with these codes are not to be requested/requisitioned individually. They must be made from bulk material which is identified by the part number in the DESCRIPTION AND USABLE ON CODE (UOC) column and listed in the Bulk Material Group of the repair parts list in this RPSTL. If the item is authorized to you by the 3d position code of the SMR Code, but the source code indicates it is made at a higher level, order the item from the higher level of maintenance.</p>

Code	Explanation
AO - (Assembled by org/AVUM Level)	Items with these codes are not to be requested/requisitioned individually. The parts that make up the assembled item must be requisitioned or fabricated and assembled at the level of maintenance indicated by the source code. If the 3d position code of the SMR code authorizes you to replace the item, but the source code indicates the item is assembled at a higher level, order the item from the higher level of maintenance.
AF - (Assembled by DS/AVIM Level)	
AH - (Assembled by GS Category)	
AL - (Assembled by SRA)	
AD - (Assembled by Depot)	

- XA - Do not requisition an "XA" - coded item. Order its next higher assembly. (Also, refer to the NOTE below.)
- XB - If an "XB" item is not available from salvage, order it using the FSCM and part number given.
- XC - Installation drawing, diagram, instruction sheet, field service drawing, that is identified by manufacturer's part number.
- XD - Item is not stocked. Order an "XD" - coded item through normal supply channels using the FSCM and part number given, if no NSN is available.

NOTE : Cannibalization or controlled exchange, when authorized, may be used as a source of supply for items with the above source codes, except for those source coded "XA" or those aircraft support items restricted by requirements of AR 700-42.

(2) Maintenance Code. Maintenance codes tell you the level(s) of maintenance authorized to USE and REPAIR support items. The maintenance codes are entered in the third and fourth positions of the SMR Code as follows:

(a) The maintenance code entered in the third position tells you the lowest maintenance level authorized to remove, replace, and use an item. The maintenance code entered in the third position will indicate authorization to one of the following levels of maintenance.

Code	Application/Explanation
C	Crew or operator maintenance done within organizational or aviation unit maintenance.
O	Organizational or aviation unit category can remove, replace, and use the item.
F	Direct support or aviation intermediate level can remove, replace, and use the item.
H	General support level can remove, replace, and use the item.

Code	Application/Explanation
L	Specialized repair activity can remove, replace, and use the item.
D	Depot level can remove, replace, and use the item.

(b) The maintenance code entered in the fourth position tells whether or not the item is to be repaired and identifies the lowest maintenance level with the capability to do complete repair (i.e., perform all authorized repair functions). (NOTE: Some limited repair may be done on the item at a lower level of maintenance, if authorized by the Maintenance Allocation Chart (MAC) and SMR codes.) This position will contain one of the following maintenance codes.

Code	Application/Explanation
O	Organizational or aviation unit is the lowest level that can do complete repair of the item.
F	Direct support or aviation intermediate is the lowest level that can do complete repair of the item.
H	General support is the lowest level that can do complete repair of the item.
L	Specialized repair activity is the lowest level that can do complete repair of the item.
D	Depot is the lowest level that can do complete repair of the item.
Z	Nonreparable. No repair is authorized.
B	No repair is authorized. (No parts or special tools are authorized for the maintenance of a "B" coded item.) However, the item may be reconditioned by adjusting, lubricating, etc., at the user level.

(3) Recoverability Code. Recoverability codes are assigned to items to indicate the disposition action on unserviceable items. The recoverability code is entered in the fifth position of the SMR Code as follows:

Recoverability Codes	Application/Explanation
Z	Nonreparable item. When unserviceable, condemn and dispose of the item at the level of maintenance shown in 3d position of SMR Code.



Recoverability Codes	Application/Explanation
O	Reparable item. When uneconomically reparable, condemn and dispose of the item at organizational or aviation unit level.
F	Reparable item. When uneconomically reparable, condemn and dispose of the item at direct support or aviation intermediate level.
H	Reparable item. When uneconomically reparable, condemn and dispose of the item at the general support level.
D	Reparable item. When beyond lower level repair capability, return to depot. Condemnation and disposal of item not authorized below depot level.
L	Reparable item. Condemnation and disposal not authorized below Specialized Repair Activity (SRA).
A	Item requires special handling or condemnation procedures because of specific reasons (e.g., precious metal content, high dollar value, critical material). Refer to appropriate manuals/directives for specific instructions.

c. FSCM (Column (3)) The Federal Supply Code for Manufacturer (FSCM) is a 5-digit numeric code which is used to identify the manufacturer, distributor, or Government agency, etc., that supplies the item.

d. PART NUMBER (Column (4)). Indicates the primary number used by the manufacturer (individual, company, firm, corporation, or Government activity), which controls the design and characteristics of the item by means of its engineering drawings, specifications standards, and inspection requirements to identify an item or range of items.

NOTE: When you use an NSN to requisition an item, the item you receive may have a different part number from the part ordered.

e. DESCRIPTION AND USABLE ON CODE (UOC) (Column (5)). This column includes the following information:

(1) The Federal item name and, when required, a minimum description to identify the item.

(2) Part numbers for bulk materials are referenced in this column in the line item entry for the item to be manufactured/fabricated.

(3) When the item is not used with all serial numbers of the same model, the effective serial numbers are shown on the last line(s) of the description (before UOC).

(4) The usable on code, when applicable (see paragraph 5, Special information).

(5) The statement "END OF FIGURE" appears just below the last item description in Column 5 for a given figure in both Section II and Section III.

f. QTY (Column (6)). The QTY (quantity per figure column) indicates the quantity of the item used in the breakout shown on the illustration figure, which is prepared for a functional group, sub-functional group, or an assembly. A "V" appearing in this column in lieu of a quantity indicates that the quantity is variable and the quantity may vary from application to application.

4. Explanation of Columns (Sect. IV).

a. NATIONAL STOCK NUMBER (NSN) INDEX.

(1) STOCK NUMBER column. This column lists the NSN by National Item Identification Number (NIIN) sequence. The NIIN consists of the last nine digits of the NSN (i.e.,  $\frac{\text{NSN}}{\text{NIIN}}$  5305-01-674-1467). When using this column to locate an item, ignore the first 4 digits of the NSN. However, the complete NSN should be used when ordering items by stock number.

(2) FIG. column. This column lists the number of the figure where the item is identified/located. The figures are in numerical order in Section II and Section III.

(3) ITEM column. The item number identifies the item associated with the figure listed in the adjacent FIG. column. This item is also identified by the NSN listed on the same line.

b. PART NUMBER INDEX. Part numbers in this index are listed by part number in ascending alphanumeric sequence (i.e., vertical arrangement of letter and number combination which places the first letter or digit of each group in order A through Z, followed by the numbers 0 through 9 and each following letter or digit in like order).

(1) FSCM column. The Federal Supply Code for Manufacturer (FSCM) is a 5-digit numeric code used to identify the manufacturer, distributor, or Government agency, etc., that supplies the item.

(2) PART NUMBER column. Indicates the primary number used by the manufacturer (individual, firm, corporation, or Government activity), which controls the design and characteristics of the item by means of its engineering drawings, specifications standards, and inspection requirements to identify an item or range of items.

(3) STOCK NUMBER column. This column lists the NSN for the associated part number and manufacturer identified in the PART NUMBER and FSCM columns to the left.

(4) FIG. column. This column lists the number of the figure where the item is identified/located in Section II and III.

(5) ITEM column. The item number is that number assigned to the item as it appears in the figure referenced in the adjacent figure number column.

5. Special Information.

a. USABLE ON CODE. The usable on code appears in the lower left corner of the Description column heading. Usable on codes are shown as "UOC: . . . . ." in the Description column (justified left) on the first line applicable item description/nomenclature. Uncoded items are applicable to all models. Identification of the usable on codes used in the RPSTL are:

<u>Code</u>	<u>Used On</u>
719	M32 Tank Periscope
711	M32C Tank Periscope
F33	M32E1 Tank Periscope
L32	M32CE1 Tank Periscope

b. FABRICATION INSTRUCTIONS. Bulk materials required to manufacture items are listed in the Bulk Material Function Group of this RPSTL. Part numbers for bulk materials are also referenced in the description column of the line item entry for the item to be manufactured/fabricated. Detailed fabrication instructions for items source codes to be manufactured or fabricated are found in TM 9-1240-379-34.

c. INDEX NUMBERS. Items which have the word BULK in the figure column will have an index number shown in the item number column. This index number is a cross-reference between the National Stock Number/Part Number Index and the bulk material list in Section II.

d. ASSOCIATED PUBLICATIONS. The publication(s) listed below pertain to the M32 Series Tank Periscopes and their components.

<u>Publication</u>	<u>Short Title</u>
TM 9-1240-379-34	Tank Periscope: M32, M32C, M32E1, M32CE1.

6. How to Locate Repair Parts.

a. When National Stock Number or Part Number is Not Known.

(1) First. Using the table of contents, determine the assembly group or subassembly group to which the item belongs. This is necessary since figures are prepared for assembly groups and subassembly groups, and listings are divided into the same groups.

(2) Second. Find the figure covering the assembly group or subassembly group to which the item belongs.

(3) Third. Identify the item on the figure and note the item number.

(4) Fourth. Refer to the Repair Parts List for the figure to find the part number for the item number noted on the figure.

(5) Fifth. Refer to the Part Number Index to find the NSN, if assigned.

b. When National Stock Number or Part Number is Known.

(1) First. Using the Index of National Stock Numbers and Part Numbers, find the pertinent National Stock Number or Part Number. The NSN index is in National Item Identification Number (NIIN) sequence (see 4.1(1)). The part numbers in the Part Number index are listed in ascending alphanumeric sequence (see 4.b). Both indexes cross-reference you to the illustration figure and item number of the item you are looking for.

(2) Second. After finding the figure and item number, verify that the item is the one you're looking for, then locate the item number in the repair parts list for the figure.

7. Abbreviations. Not applicable.



Section II REPAIR PARTS LIST

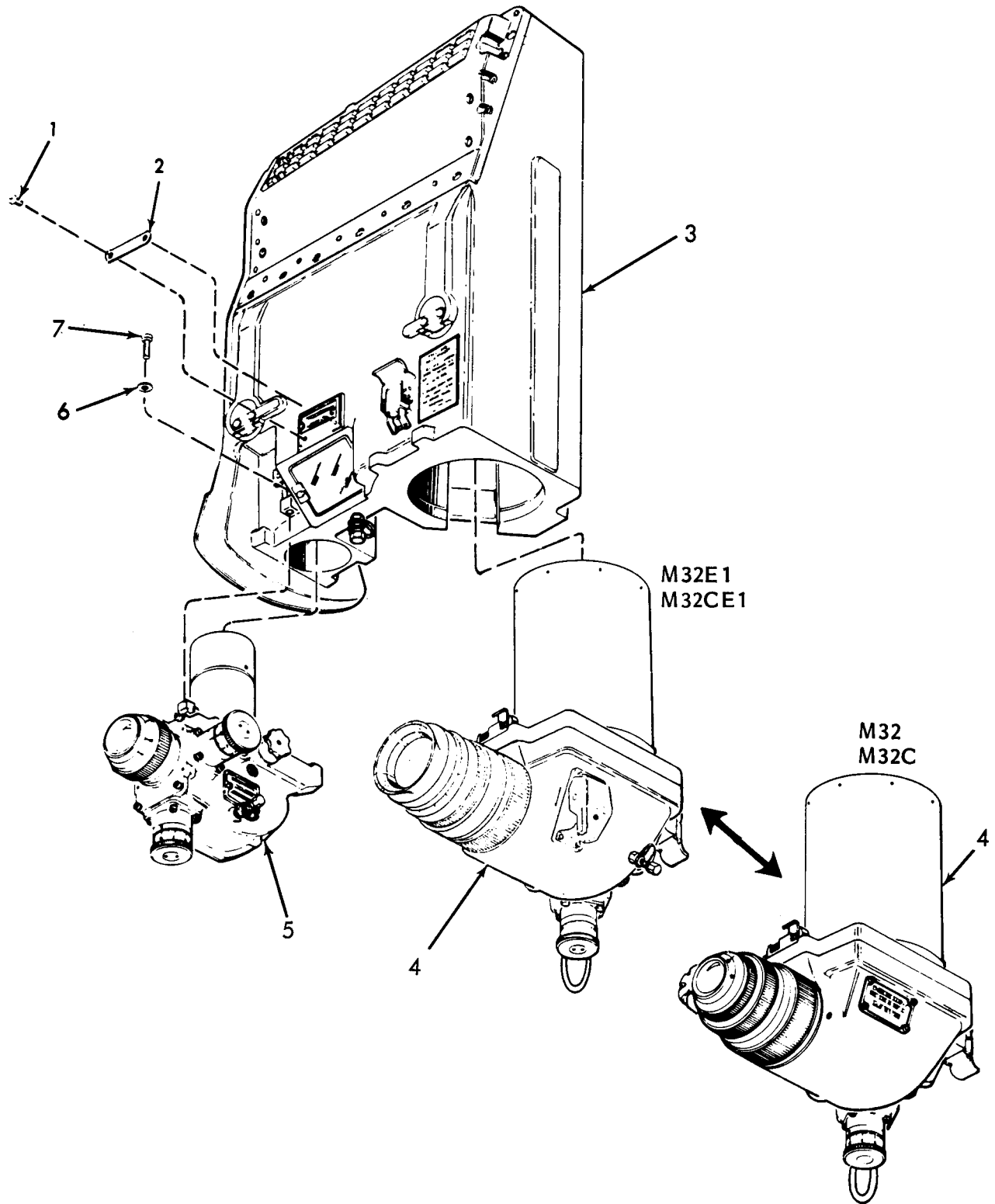


Figure 1. Tank periscope, M32 10514284, M32C 10516600, M32E1 11747400, and M32CE1 11747440

## SECTION II

TM9-1240-379-34P

(1) ITEM NO	(2) SMR CODE	(3) FSCM	(4) PART NUMBER	(5) DESCRIPTION AND USABLE ON CODE (UOC)	(6) QTY
				GROUP 00 TANK PERISCOPE M32 10514284, M32C 10516600, M32E1 11747400, AND M32CE1 11747440	
				FIG. 1 TANK PERISCOPE M32 10514284, M32C 10516600, M32E1 11747400, AND M32CE1 11747440	
1	PADZZ	96906	MS51957-12	SCREW, MACHINE	2
2	PADZZ	19200	10556523	PLATE UOC:711	1
2	XBDZZ	19200	10556524	PLATE, IDENTIFICATION UOC:719	1
2	PADZZ	19200	11747352	PLATE UOC:F33	1
2	PADZZ	19200	11747446	PLATE, IDENTIFICATION UOC:L32	1
3	PAODD	19200	11747439	HEAD ASSEMBLY, TANK UOC:L32	1
3	PAODD	19200	11727486	HEAD ASSEMBLY UOC:F33, 719	1
3	PAODD	19200	10541990	HEAD ASSEMBLY UOC:711	1
4	PAODD	19200	11733401	ELBOW ASSEMBLY UOC:F33, L32	1
4	PAODD	19200	11743800	BODY ASSEMBLY (INFRARED) UOC:711,719	1
5	PAODD	19200	10516576	BODY ASSEMBLY (DAYLIGHT) UOC:L32, 711	1
5	PAODD	19200	11747350	BODY ASSEMBLY (DAYLIGHT) UOC:F33,719	1
6	PAOZZ	96906	MS35338-137	WASHER, LOCK UOC: F33,719	2
7	PAOZZ	96906	MS16995-27	SCREW, CAP, SOCKET HEAD UOC:F33,719	2

END OF FIGURE

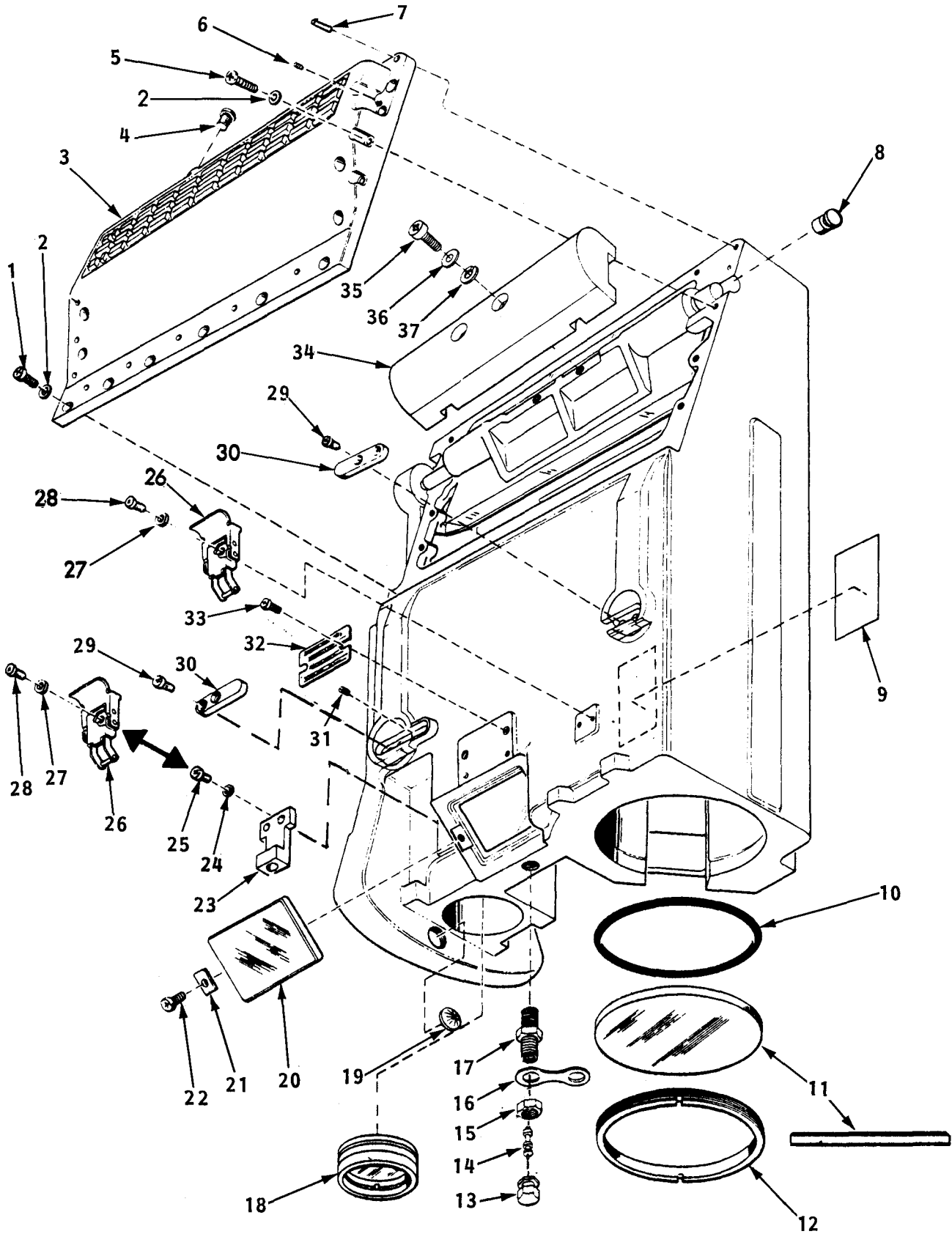


Figure 2. Head assembly 11727486, 10541990, and 11747439 (partial view-back)



## SECTION II

TM9-1240-379-34P

(1) ITEM NO	(2) SMR CODE	(3) FSCM	(4) PART NUMBER	(5) DESCRIPTION AND USABLE ON CODE (UOC)	(6) QTY
				GROUP 01 HEAD ASSEMBLY 11727486, 10541990, AND 11747439	
				FIG. 2 HEAD ASSEMBLY 11727486, 10541990, AND 11747439 (PARTIAL VIEW-BACK)	
1	PADZZ	96906	MS51957-44	SCREW, MACHINE	6
2	PADZZ	96906	MS35333-72	WASHER, LOCK	19
3	XBDZZ	19200	10514223	COVER	1
4	PAOZZ	96906	MS3212-23	SCREW, MACHINE	1
5	PADZZ	96906	MS51957-45	SCREW, MACHINE	13
6	PADZZ	96906	MS51965-17	SETSCREW	2
7	PADZZ	96906	MS16555-640	PIN, STRAIGHT	2
8	PADZZ	19200	10514266	PLUG, STOPPER	1
9	PAFZZ	19200	7694537	DECAL UOC:711	1
10	PADZZ	19200	10514259	PACKING, PREFORMED	1
11	PADZZ	19200	10514254	WINDOW, OPTICAL INSTRUMENT (SELECT)	1
11	PADZZ	19200	10514254-1	WINDOW, OPTICAL INSTRUMENT (SELECT)	1
11	PADZZ	19200	10514254-2	WINDOW, OPTICAL INSTRUMENT (SELECT) UOC:771	1
12	PADZZ	19200	10514241	RING, EXTERNALLY THREADED	1
13	PAOZZ	19200	8200055	CAP, PNEUMATIC VALVE	1
14	PAFZZ	96906	MS51377-2	VALVE CORE	1
15	PAFZZ	19200	11737597	NUT, PLAIN, HEXAGON	1
16	PAFZZ	19200	10516567	STRAP, VALVE CAP	1
17	PAFZZ	96906	MS51607-1	VALVE STEM, PURGING	1
18	PADZZ	19200	10541994	CELL ASSEMBLY UOC:L32,711	1
18	PADZZ	19200	8289187	PRISM, OPTICAL INSTRUMENT ELEMENT (SELECT) UOC:F33,719	1
18	PADZZ	19200	8289187-1	CELL, OPTICAL ELEMENT (SELECT) UOC:F33,719	1
19	PADZZ	96906	MS9380-10	PLUG, EXPANSION	1
20	PADZZ	19200	10514256	WINDOW, OPTICAL INSTRUMENT	1
21	PADZZ	19200	8289190	CLAMP, RIM	2
22	PADZZ	96906	MS51960-29	SCREW, MACHINE	6
23	PAFZZ	19200	11727470	BRACKET, ANGLE UOC:F33,719	1
24	PAFZZ	96906	MS35338-137	WASHER, LOCK UOC:F33, 719	4
25	PAFZZ	96906	MS16995-17	SCREW, CAP, SOCKET UOC:F33,719	2
26	PAFZZ	19200	11727073-1	LATCH, PERISCOPE UOC:F33,719	1
26	PAFZZ	19200	11727073-1	LATCH, PERISCOPE UOC:L32,711	2
27	PAFZZ	96906	MS35335-58	WASHER, LOCK UOC:L32,711	6

## SECTION II

TM9-1240-379-34P

(1) ITEM NO	(2) SMR CODE	(3) FSCM	(4) PART NUMBER	(5) DESCRIPTION AND USABLE ON CODE (UOC)	(6) QTY
28	PAFZZ	96906	MS51957-27	SCREW, MACHINE UOC:L32,711	4
29	PADZZ	96906	MS51959-45	SCREW, MACHINE	4
30	XBDZZ	19200	8298424	STOP	2
31	PADZZ	96906	MS51031-25	SETSCREW	5
32	PADZZ	19200	11727408	PLATE, IDENTIFICATION UOC:711	1
32	PADZZ	19200	11727487	PLATE, IDENTIFICATION UOC:F33,719	1
32	PADZZ	19200	11747444	PLATE, IDENTIFICATION UOC:L32	1
33	PADZZ	96906	MS51957-12	SCREW, MACHINE	2
34	XBDZZ	19200	10524951	WEIGHT	1
35	PADZZ	96906	MS51957-66	SCREW, MACHINE	2
36	PADZZ	96906	MS15795-808	WASHER, FLAT	2
37	PADZZ	96906	MS35333-73	WASHER, LOCK	2

END OF FIGURE



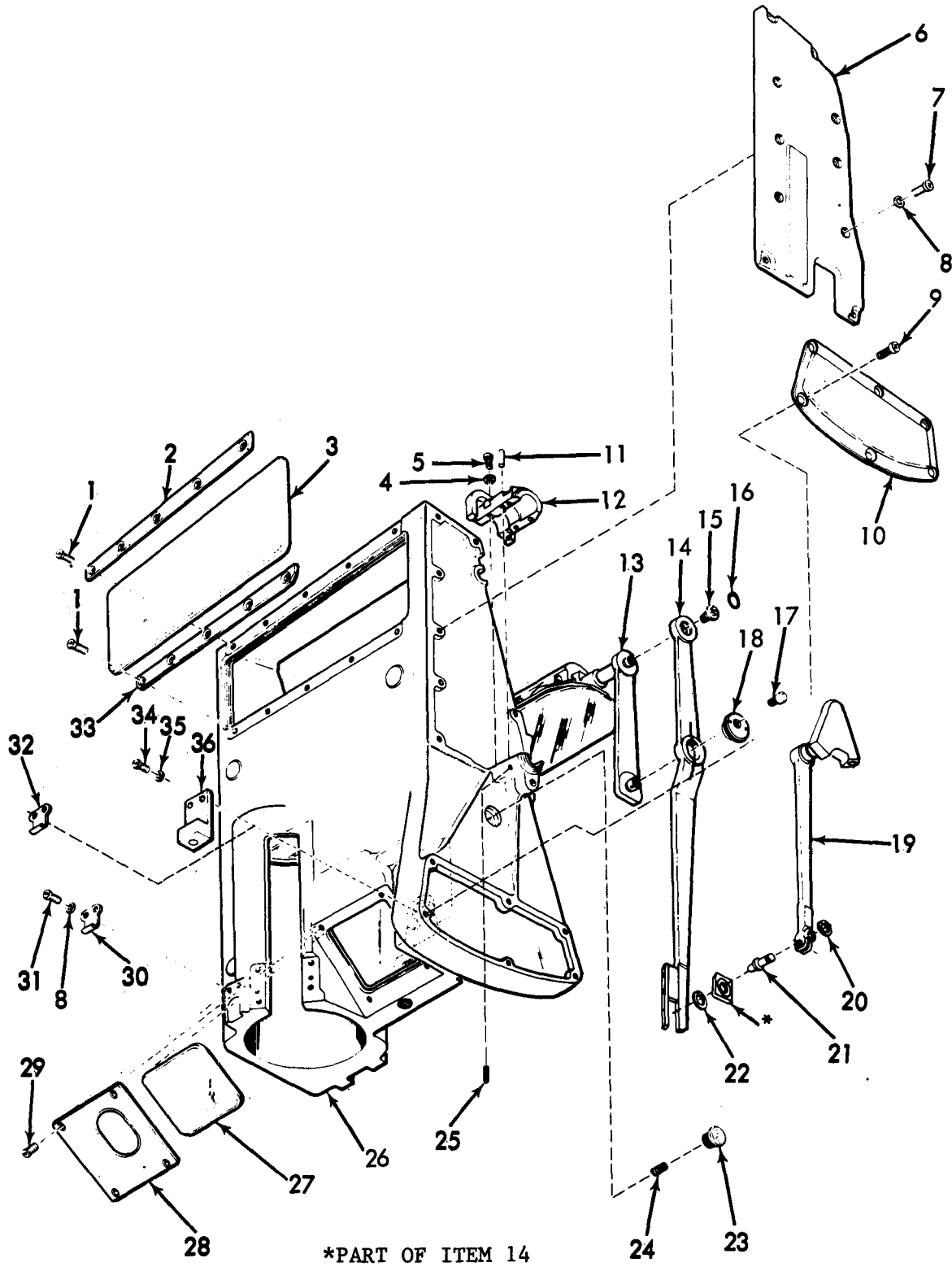


Figure 3. Head assembly 11727486, 10541990, and 11747439  
(partial view-front)

## SECTION II

TM9-1240-379-34P

(1) ITEM NO	(2) SMR CODE	(3) FSCM	(4) PART NUMBER	(5) DESCRIPTION AND USABLE ON CODE (UOC)	(6) QTY
				GROUP 01 HEAD ASSEMBLY 11727486, 10541990, AND 11747439	
				FIG. 3 HEAD ASSEMBLY 11727486, 10541990, AND 11747439 (PARTIAL VIEW-FRONT)	
1	PAHZZ	96906	MS51959-26	SCREW, MACHINE	10
2	XBHZZ	19200	10514239	STRIP	1
3	PAHZZ	19200	10514255	WINDOW, OPTICAL INSTRUMENT	1
4	PADZZ	96906	MS35333-71	WASHER, LOCK	4
5	PADZZ	96906	MS51957-31	SCREW, MACHINE	4
6	XBDZZ	19200	10514230	COVER	1
7	PADZZ	96906	MS51957-44	SCREW, MACHINE	10
8	PAFZZ	96906	MS35335-59	WASHER, LOCK	12
9	PADZZ	96906	MS51959-44	SCREW, MACHINE	6
10	XBDZZ	19207	7659444	COVER	1
11	PADZZ	96906	MS16555-640	PIN, STRAIGHT	4
12	XBDZZ	19200	10514236	CAP	1
13	PADZZ	19200	10524948	SUPPORT ASSEMBLY	1
14	PADZZ	19200	10514243	ARM, SLIDE ASSEMBLY	1
15	PADZZ	19200	8298412	SCREW, ASSEMBLED	1
16	PADZZ	96906	MS16625-4045	RING, RETAINING	1
17	PADZZ	19200	10514252	SCREW, CAP, SOCKET HEAD	1
18	PADZZ	19200	10514240	ECCENTRIC	1
19	PADZZ	19200	10514267	COUPLING ARM	1
20	PADZZ	96906	MS16624-1025	RING, RETAINING	1
21	PADZZ	19200	8298419	ECCENTRIC	1
22	PADZZ	96906	MS16624-5018-1	RING, RETAINING	1
23	PADZZ	19207	10514265	PLUG, MACHINE	1
24	PADZZ	96906	MS51031-25	SETSCREW	5
25	PADZZ	96906	MS51021-22	SETSCREW	3
26	XADZZ	19200	11747304	HOUSING	1
				UOC:F33,719	
26	XADZZ	19200	11747442	HOUSING	1
				UOC:L32	
26	XADZZ	19200	10541991	HOUSING	1
				UOC:711	
27	PADZZ	19200	10514257	MIRROR, OPTICAL INSTRUMENT	1
28	XBDZZ	19200	10514242	COVER	1
29	PADZZ	96906	MS51960-29	SCREW, MACHINE	6
30	PAFZZ	19200	10514258	STRIKE	1
				UOC:711	
30	PAFZZ	19200	11747322	STRIKE	1
				UOC:F33,L32,719	
31	PAFZZ	96906	MS51957-42	SCREW, MACHINE	2
32	PAFZZ	19200	11727073-2	STRIKE, PERISCOPE	2
				UOC:L32,711	
33	XBHZZ	19200	10514238	STRIP	1
34	PAFZZ	96906	MS16998-11	SCREW, CAP, SOCKET HEAD	2
				UOC:F33,719	

## SECTION II

TM9-1240-379-34P

(1) ITEM NO	(2) SMR CODE	(3) FSCM	(4) PART NUMBER	(5) DESCRIPTION AND USABLE ON CODE (UOC)	(6) QTY
34	PAFZZ	96906	MS51958-28	SCREW, MACHINE UOC:L32,711	2
35	PAFZZ	96906	MS35335-58	WASHER, LOCK UOC:L32,711	2
35	PAFZZ	96906	MS35338-137	WASHER, LOCK UOC:F33,719	2
36	PAFZZ	19200	11727472	BRACKET, ANGLE UOC:F33,719	1

END OF FIGURE



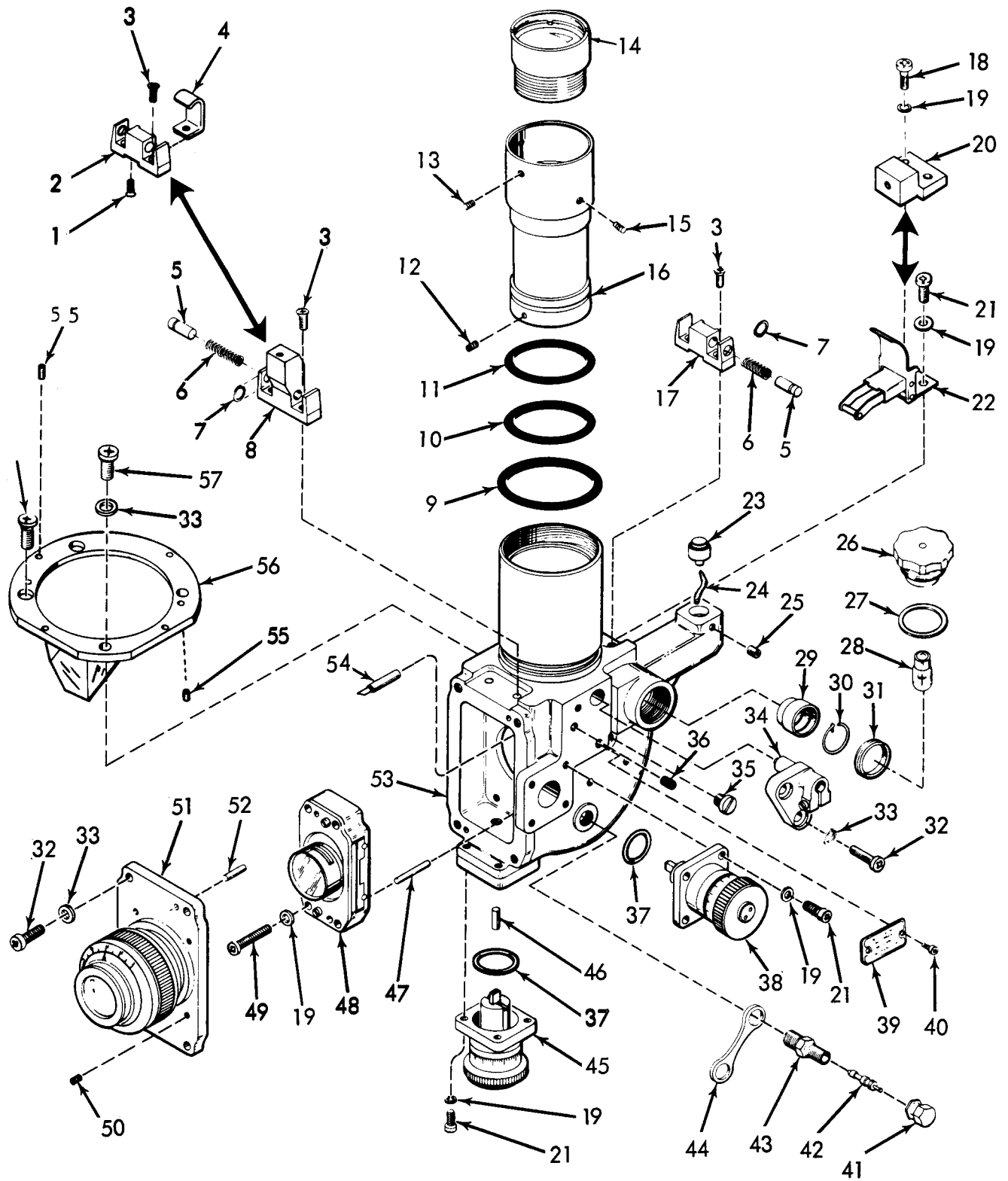


Figure 4. Body assembly (daylight) 11747350 and 10516576, and Optical cell assembly 8289278



(1) ITEM NO	(2) SMR CODE	(3) FSCM	(4) PART NUMBER	(5) DESCRIPTION AND USABLE ON CODE (UOC)	(6) QTY
				GROUP 02 BODY ASSEMBLY (DAYLIGHT) 11747350 AND 10516576, AND GROUP 0201 OPTICAL CELL ASSEMBLY 8289278	
				FIG. 4 BODY ASSEMBLY (DAYLIGHT) 11747350 AND 10516576, AND OPTICAL CELL ASSEMBLY 8289278	
1	PAFZZ	96906	MS51960-16	SCREW, MACHINE UOC:L32,711	1
2	PAFZZ	19200	8289282	KEY, MACHINE UOC:L32,711	1
3	PAFZZ	96906	MS51959-27	SCREW, MACHINE	4
4	PAFZZ	19200	8289305	BRACKET, BODY ASSEMBLY UOC:L32,711	1
5	PAFZZ	19200	8289302	PLUNGER, DETENT	2
6	PAFZZ	19200	8289303	SPRING, HELICAL	2
7	PAFZZ	96906	MS16624-5018-1	RING, RETAINING	2
8	XBFZZ	19200	11727469	KEY UOC:F33,719	1
9	PADZZ	19200	10516251	PACKING, PREFORMED	1
10	PADZZ	19200	8289306	PACKING, PREFORMED	1
11	PADZZ	19200	8289308	PACKING, PREFORMED	1
12	PADZZ	96906	MS51031-15	SETSCREW	4
13	PADZZ	96906	MS51031-7	SETSCREW	2
14	PADZZ	19200	8289278	CELL ASSEMBLY, OPTICAL	1
15	PADZZ	96906	MS51031-24	SETSCREW	2
16	XBDZZ	19200	8289280	SLEEVE	1
17	XBFZZ	19200	8289283	KEY	1
18	PAFZZ	96906	MS16995-17	SCREW, CAP, SOCKET UOC:F33,719	2
19	PAFZZ	96906	MS35338-136	WASHER, LOCK	14
20	PAFZZ	19200	11727471	BLOCK UOC:F33,719	1
21	PAFZZ	96906	MS51957-27	SCREW, MACHINE UOC:F33,719	8
21	PAFZZ	96906	MS51957-27	SCREW, MACHINE UOC:L32,711	10
22	PAFZZ	19200	11727073-1	LATCH, PERISCOPE UOC:L32,711	1
23	PAFZZ	19200	8289234	CONTACT	1
24	MHHZZ	81349	M16878/4BGE9	WIRE MAKE FROM PN M16878/4BGE9 UOC:F33,711,719	1
25	PAFZZ	96906	MS51038-26	SETSCREW	1
26	PAOZZ	19200	10549636	LAMPHOLDER	1
27	PAOZZ	19200	7652132	GASKET	1
28	PAOZZ	96906	MS25231-313	LAMP, INCANDESCENT	1
29	PAFZZ	19200	8237663	CONNECTOR	1
30	PAFZZ	19204	8289335	RING, ELECTRICAL	1
31	PAFZZ	19200	7659182	RING, EXTERNALLY THREADED	1
32	PAFZZ	96906	MS51957-45	SCREW, MACHINE	6

## SECTION II

TM9-1240-379-34P

(1) ITEM NO	(2) SMR CODE	(3) FSCM	(4) PART NUMBER	(5) DESCRIPTION AND USABLE ON CODE (UOC)	(6) QTY
33	PAFZZ	96906	MS35338-137	WASHER, LOCK	8
34	XBDZZ	19200	11727431	ECCENTRIC	1
35	PAFZZ	19200	10555157-14	SCREW, MACHINE	1
36	PADZZ	96906	MS51029-61	SETSCREW	1
37	PAFZZ	19200	8205653	PACKING, PREFORMED	2
38	PAFZZ	19200	10516232	KNOB ASSEMBLY UOC:F33,719	1
38	PAFZZ	19200	10516384	KNOB ASSEMBLY UOC:L32,711	1
39	XBDZZ	19200	11727407	PLATE UOC:L32,711	1
39	PADZZ	19200	11747351	PLATE UOC:F33,719	1
40	PADZZ	96906	MS51957-11	SCREW, MACHINE	2
41	PAOZZ	19200	8200055	CAP, PNEUMATIC VALVE	1
42	PAFZZ	96906	MS51377-2	VALVE CORE	1
43	PAFZZ	96906	MS51607-1	VALVE STEM, PURGING	1
44	PAFZZ	19200	10516567	STRAP, VALVE CAP	1
45	PAFZZ	19200	10516367	KNOW ASSEMBLY, ELEVATION UOC:L32,711	1
45	PAFZZ	19200	8289226	KNOW ASSEMBLY, BORESIGHTING UOC:F33,719	1
46	PADZZ	96906	MS9105-57	PIN, STRAIGHT	1
47	PADZZ	96906	MS9105-36	PIN, STRAIGHT	2
48	PADDD	19200	10516366	CELL ASSEMBLY, OPTICAL UOC:L32,711	1
48	PADDD	19200	8289218	CELL ASSEMBLY, OPTICAL UOC:F33,719	1
49	PADZZ	96906	MS51957-32	SCREW, MACHINE UOC:L32,711	4
50	PADZZ	96906	MS51031-16	SETSCREW	4
51	PAFDD	19200	8289217	CELL ASSEMBLY, OPTICAL	1
52	PADZZ	96906	MS9105-32	PIN, STRAIGHT	2
53	XADZZ	19200	11727076	HOUSING	1
54	PADZZ	19200	10541984	LIGHT CONDUCTOR	1
55	PADZZ	96906	MS9105-28	PIN, STRAIGHT	2
56	PADZZ	19200	8289221	PRISM ASSEMBLY	1
57	PADZZ	96906	MS51957-43	SCREW, MACHINE	2
58	PADZZ	96906	MS51959-43	SCREW, MACHINE	2

END OF FIGURE



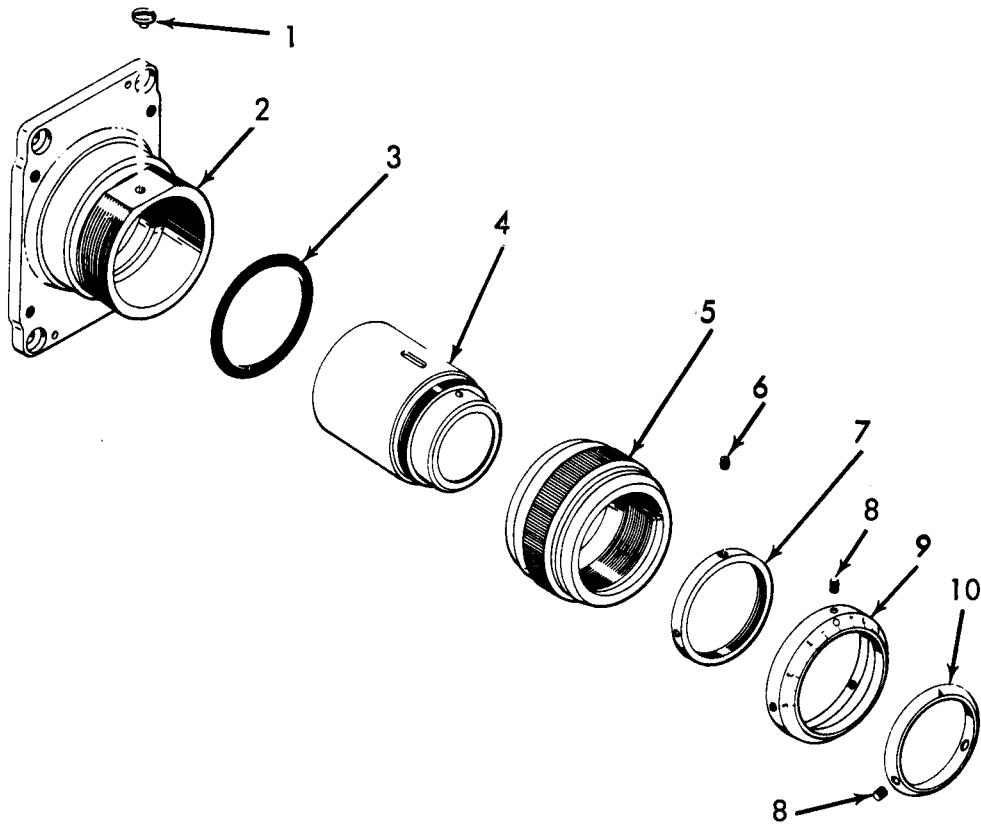


Figure 5. Optical cell assembly 8289217

## SECTION II

TM9-1240-379-34P

(1) ITEM NO	(2) SMR CODE	(3) FSCM	(4) PART NUMBER	(5) DESCRIPTION AND USABLE ON CODE (UOC)	(6) QTY
				GROUP 0202 OPTICAL CELL ASSEMBLY 8289217	
				FIG. 5 OPTICAL CELL ASSEMBLY 8289217	
1	PAHZZ	19200	8289238	STOP	1
2	XBDZZ	19200	8289224	ADAPTER	1
3	PAHZZ	19200	8289239	PACKING, PREFORMED	1
4	XBDZZ	19200	8289225	CELL, OPTICAL ELEMENT	1
5	XBHZZ	19200	8289272	ADAPTOR DIOPTER, OPTICAL	1
6	PAHZZ	21450	540969	SETSCREW	1
7	XBHZZ	19200	8289294	RING, LOCKING	1
8	PAHZZ	21450	503916	SETSCREW	5
9	PAHZZ	19200	8289266	SCALE, DIOPTER	1
10	PAHZZ	19200	8289274	POINTER, DIAL	1
				END OF FIGURE	

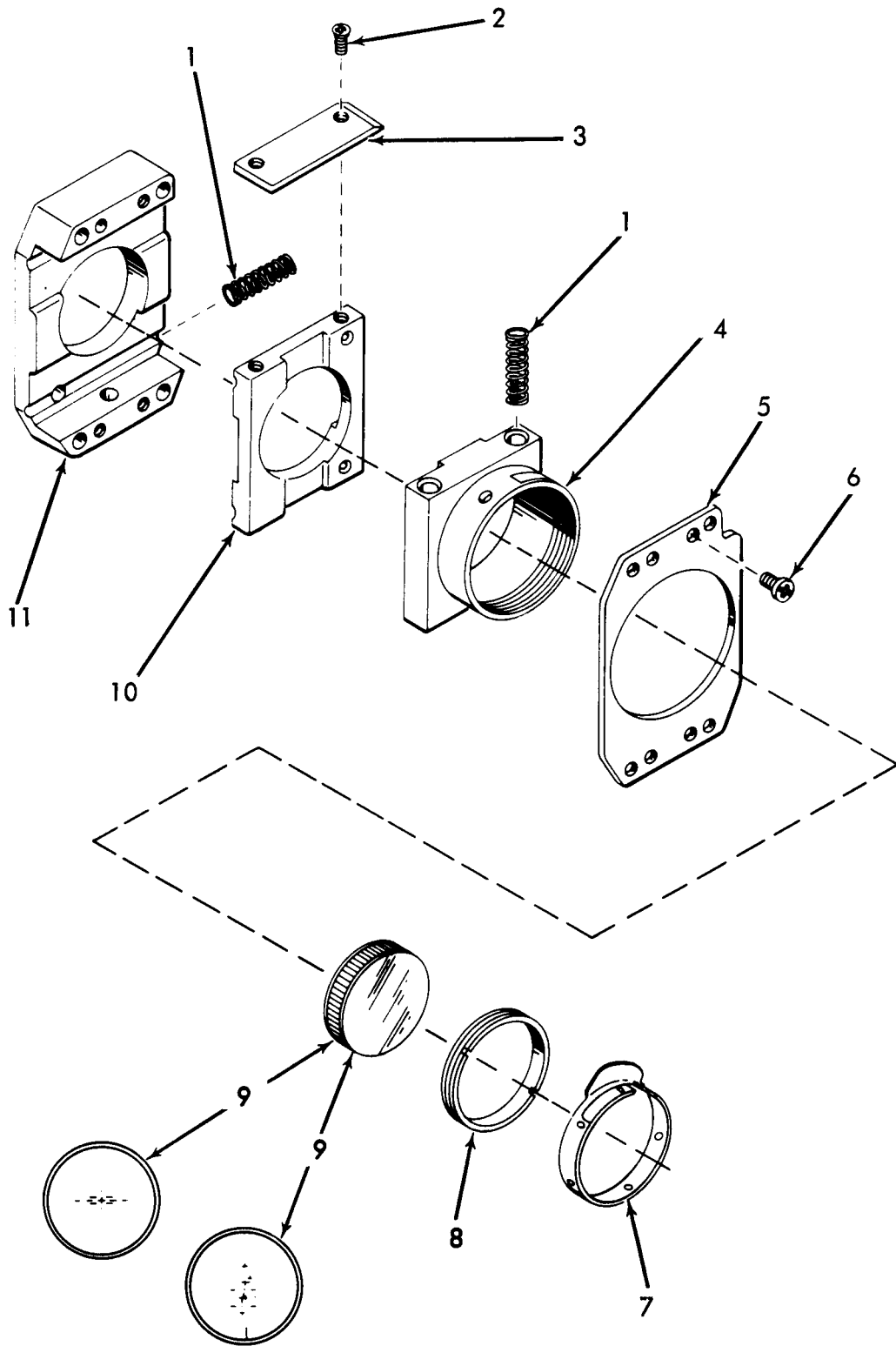


Figure 6. Optical cell assembly 10516366 and 8289218

## SECTION II

TM9-1240-379-34P

(1) ITEM NO	(2) SMR CODE	(3) FSCM	(4) PART NUMBER	(5) DESCRIPTION AND USABLE ON CODE (UOC)	(6) QTY
				GROUP 0203 OPTICAL CELL ASSEMBLY 10516366 AND 8289218	
				FIG. 6 OPTICAL CELL ASSEMBLY 10516366 AND 8289218	
1	PADZZ	19200	8289256	SPRING, HELICAL	4
2	PADZZ	96906	MS51959-2	SCREW, MACHINE	2
3	XBDZZ	19200	8289252	PLATE	1
4	XADZZ	19200	8289223	HOLDER	1
5	XBDZZ	19200	8289253	COVER	1
6	PADZZ	96906	MS35206-204	SCREW, MACHINE	2
7	XBDZZ	19200	10541985	SHIELD	1
8	PADZZ	19200	8289251	RING, EXTERNALLY THREADED	1
9	PADZZ	19200	10516832	RETICLE UOC:L32,711	1
9	PADZZ	19200	8289229	RETICLE, OPTICAL INSTRUMENT UOC:F33,719	1
10	XADZZ	19200	8289232	SLIDE	1
11	XADZZ	19200	8289231	SUPPORT	1
				END OF FIGURE	

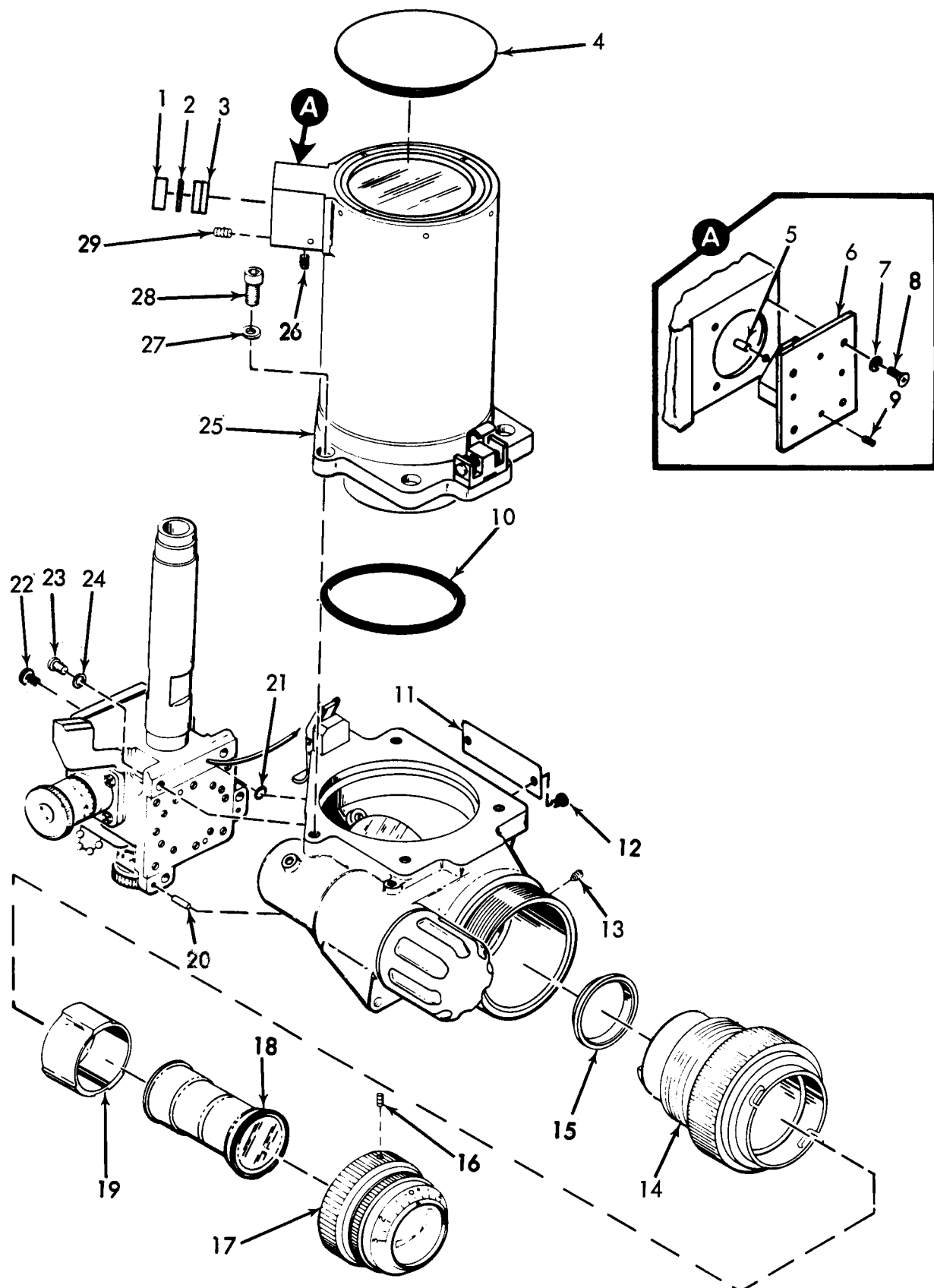


Figure 7. Body assembly (infrared) 11743800



## SECTION II

TM9-1240-379-34P

(1) ITEM NO	(2) SMR CODE	(3) FSCM	(4) PART NUMBER	(5) DESCRIPTION AND USABLE ON CODE (UOC)	(6) QTY
				GROUP 03 BODY ASSEMBLY (INFRARED) 11743800	
				FIG. 7 BODY ASSEMBLY (INFRARED) 11743800	
1	PADZZ	19200	10514581	PLUG ASSEMBLY UOC: 711,719	1
2	XADZZ	19200	10554535	RETAINER, OPTICAL UOC: 711,719	1
3	PADZZ	19200	10514272	LENS, OPTICAL UOC: 711,719	1
4	PAOZZ	19200	11727319	SHIELD SUNLIGHT UOC: 711,719	1
5	XBDZZ	96906	MS9105-30	PIN, STRAIGHT UOC: 711,719	2
6	PADZZ	19200	10548309	MIRROR, BONDED UOC: 711,719	1
7	PADZZ	96906	MS35335-57	WASHER, LOCK UOC: 711,719	4
8	PADZZ	96906	MS51957-13	SCREW, MACHINE UOC: 711,719	4
9	PADZZ	96906	MS51965-17	SETSCREW UOC: 711,719	4
10	PADZZ	19200	10514579	PACKING, PREFORMED UOC: 711,719	1
11	XBDZZ	19200	11743799	PLATE UOC: 711,719	1
12	PADZZ	96906	MS51957-12	SCREW, MACHINE UOC: 711,719	2
13	PADZZ	96906	MS51045-49	SETSCREW UOC: 711,719	1
14	PADZZ	19200	10541952	SLEEVE ASSEMBLY UOC: 711,719	1
15	PADZZ	19200	10541930	CONTACT PERISCOPE UOC: 711,719	1
16	PAFZZ	96906	MS18068-2	SETSCREW UOC: 711,719	2
17	PAFDD	19200	10516734	EYEPiece ASSEMBLY UOC: 711,719	1
18	PAFZZ	81349	MILE1-1049	ELECTRON TUBE UOC: 711,719	1
19	PADZZ	19200	11727131	COLLAR PERISCOPE UOC: 711,719	1
20	PADZZ	96906	MS9105-57	PIN, STRAIGHT UOC: 711,719	2
21	PADZZ	19200	8621144	PACKING, PREFORMED UOC: 711,719	1
22	PADZZ	96906	MS3212-23	SCREW, MACHINE UOC: 711,719	1
23	PADZZ	96906	MS51957-64	SCREW, MACHINE	4

## SECTION II

TM9-1240-379-34P

(1) ITEM NO	(2) SMR CODE	(3) FSCM	(4) PART NUMBER	(5) DESCRIPTION AND USABLE ON CODE (UOC)	(6) QTY
24	PADZZ	96906	MS35333-73	UOC: 711, 719 WASHER, LOCK	4
25	PADDD	19200	10548202	UOC: 711, 719 CELL ASSEMBLY, OPTICAL	1
26	PADZZ	96906	MS51029-9	UOC: 711, 719 SETSCREW	3
27	PADZZ	96906	MS35333-74	UOC: 711, 719 WASHER, LOCK	4
28	PADZZ	96906	MS16995-49	UOC: 711, 719 SCREW, CAP, SOCKET HEAD	4
29	PADZZ	96906	MS51029-27	UOC: 711, 719 SETSCREW	1

END OF FIGURE



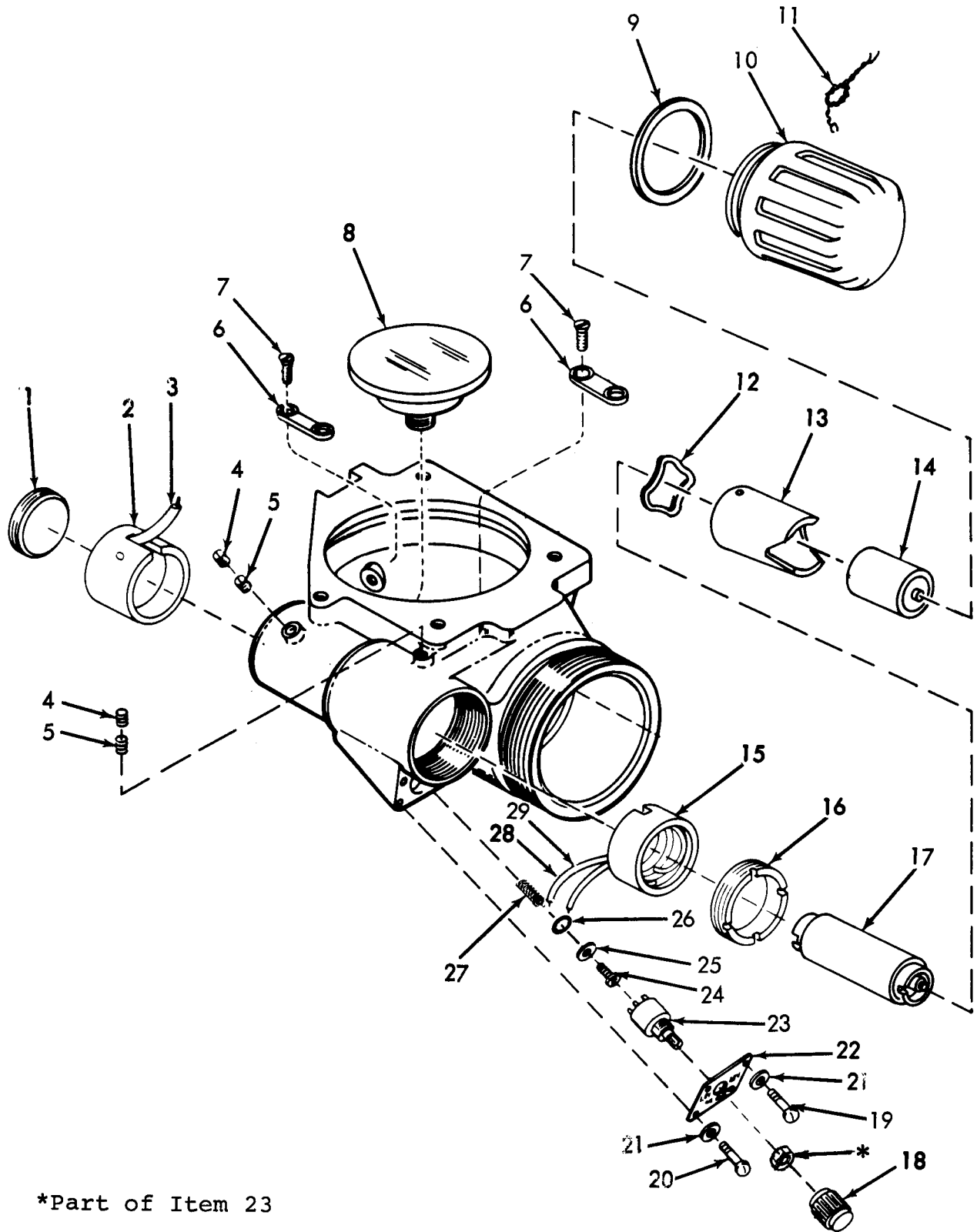


Figure 8. Body assembly (infrared) 11743800 (partial view-top)

## SECTION II

TM9-1240-379-34P

(1) ITEM NO	(2) SMR CODE	(3) FSCM	(4) PART NUMBER	(5) DESCRIPTION AND USABLE ON CODE (UOC)	(6) QTY
				GROUP 03 BODY ASSEMBLY (INFRARED) 11743800	
				FIG. 8 BODY ASSEMBLY (INFRARED) 11743800 (PARTIAL VIEW-TOP)	
1	PAHZZ	19200	8620049	PLUG, PROTECTIVE, DUST UOC: 711, 719	1
2	PAHZZ	19200	10516206	CONNECTOR UOC: 711, 719	1
3	MHHZZ	81349	M7444-1-1-16	INSULATION SLEEVING MAKE FROM PN M7444-1-1-16 UOC: 711, 719	1
4	PAHZZ	96906	MS51045-20	SETSCREW UOC: 711, 719	2
5	PAHZZ	96906	MS51021-21	SETSCREW UOC: 711, 719	2
6	XDDZZ	19200	10516217	CLAMP UOC: 711, 719	2
7	PADZZ	96906	MS51959-16	SCREW, MACHINE UOC: 711, 719	2
8	PADZZ	19200	10514283	MIRROR, BONDED UOC: 711, 719	1
9	PAFZZ	19200	10542005	GASKET UOC: 711, 719	1
10	PAFZZ	19200	8589920-1	PERISCOPE SUBASSEMBLY UOC: 711, 719	1
11	PAFZZ	96906	MS51938-6	SEAL, ANTIPILFERAGE UOC: 711, 719	1
12	PAFZZ	19200	10516207	WASHER, SPRING TENSION UOC: 711, 719	1
13	PAFZZ	19200	11727607	SLEEVE, PINNED UOC: 711, 719	1
14	PAFZZ	19200	10553449	CONVERTER REGULATOR UOC: 711, 719	1
15	XAHZZ	19200	10556506	CONTACT ASSEMBLY UOC: 711, 719	1
16	XBHZZ	19200	10516212	RING, EXTERNALLY THREADED UOC: 711, 719	1
17	PAFZZ	19200	10516158	POWER SUPPLY, SOLID UOC: 711, 719	
18	PAFZZ	96906	MS91528-0E1B	KNOB UOC: 711, 719	1
19	PAFZZ	96906	MS51957-28	SCREW, MACHINE UOC: 711, 719	3
20	PAFZZ	96906	MS35275-228	SCREW, MACHINE UOC: 711, 719	1
21	PAFZZ	96906	MS35338-136	WASHER, LOCK UOC: 711, 719	4
22	XBHZZ	19200	10516219	PLATE UOC: 711, 719	1

## SECTION II

TM9-1240-379-34P

(1) ITEM NO	(2) SMR CODE	(3) FSCM	(4) PART NUMBER	(5) DESCRIPTION AND USABLE ON CODE (UOC)	(6) QTY
23	PAHZZ	19200	10516592	SWITCH, ROTARY UOC:711,719	1
24	PAHZZ	96906	MS51957-42	SCREW, MACHINE UOC:711,719	1
25	PAHZZ	96906	MS35338-137	WASHER, LOCK UOC:711,719	1
26	PAHZZ	96906	MS35431-5	TERMINAL,LUG UOC:711,719	1
27	PAHZZ	19200	10556516	CLIP, SPRING TENSION UOC:711,719	1
28	MHHZZ	81349	M16878/4BFEO	WIRE, MAKE FROM PN M16878/4BFEO UOC:711,719	1
29	MHHZZ	81349	M23053/5-104-9	INSULATION SLEEVING MAKE FROM PN M23053/5-104-9 UOC:711,719	1

END OF FIGURE



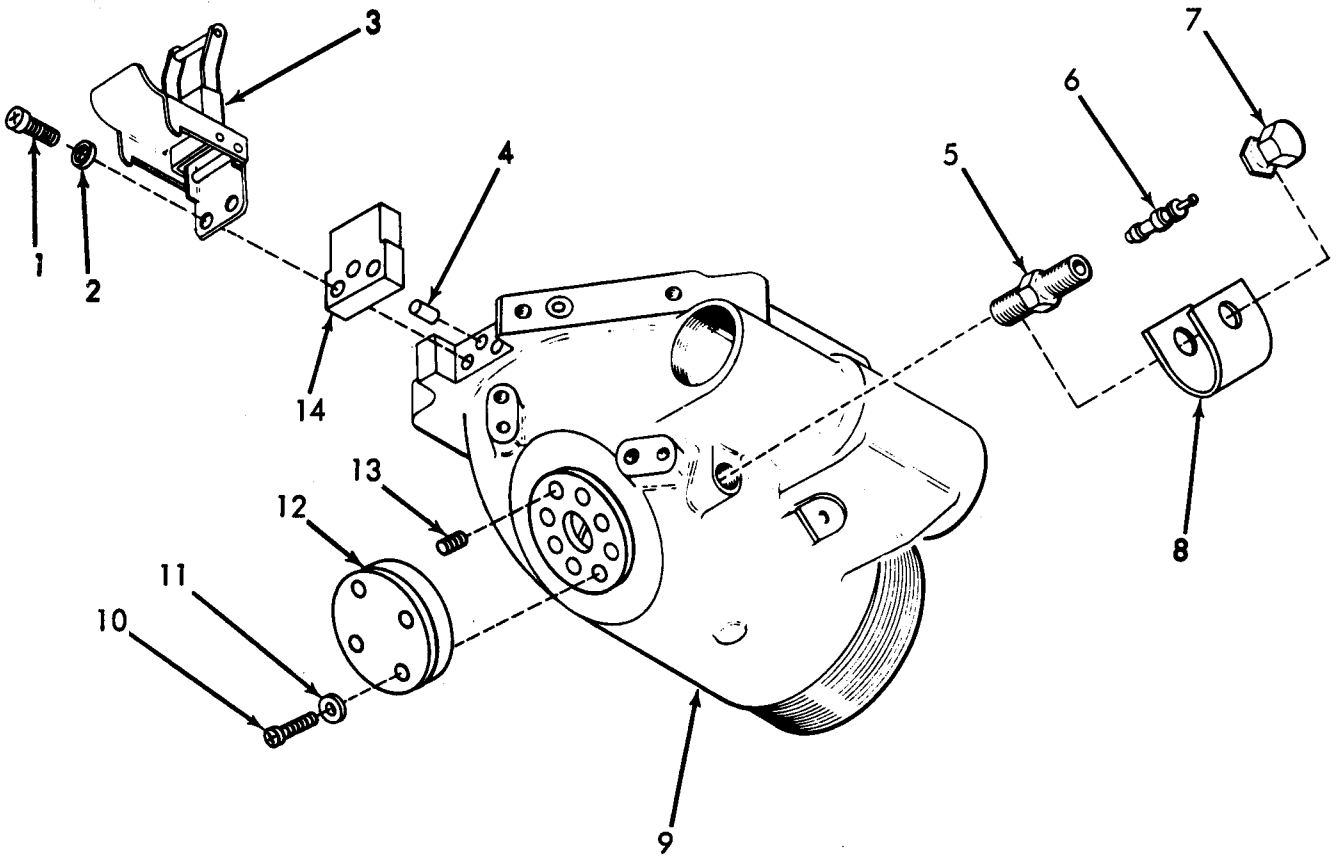


Figure 9. Body assembly (infrared) 11743800 (partial view-bottom)



## SECTION II

TM9-1240-379-34P

(1) ITEM NO	(2) SMR CODE	(3) FSCM	(4) PART NUMBER	(5) DESCRIPTION AND USABLE ON CODE (UOC)	(6) QTY
				GROUP 03 BODY ASSEMBLY (INFRARED) 11743800	
				FIG. 9 BODY ASSEMBLY (INFRARED) 11743800 (PARTIAL VIEW-BOTTOM)	
1	PAFZZ	96906	MS51957-31B	SCREW, MACHINE UOC: 711,719	2
2	PAFZZ	96906	MS35335-58	WASHER, LOCK UOC: 711,719	2
3	PAFZZ	19200	11727073-1	LATCH, PERISCOPE UOC: 711,719	1
4	XBDZZ	96906	MS9105-58	PIN, STRAIGHT UOC: 711,719	1
5	PAFZZ	96906	MS51607-1	VALVE STEM, PURGING UOC: 711,719	1
6	PAFZZ	96906	MS51377-2	VALVE CORE UOC: 711,719	1
7	PAOZZ	19200	8200055	CAP, PNEUMATIC VALVE UOC: 711,719	1
8	PAFZZ	19200	10516567	STRAP, VALVE CAP UOC: 711,719	1
9	XADZZ	19200	11727032	HOUSING UOC: 711,719	1
10	PADZZ	96906	MS51957-44	SCREW, MACHINE UOC: 711,719	4
11	PADZZ	96906	MS35335-59	WASHER, LOCK UOC: 711,719	4
12	XADZZ	19200	10514576	COVER UOC: 711,719	1
13	PADZZ	96906	MS51965-31	SETSCREW UOC: 711,719	4
14	PADZZ	19200	8213390	KEY UOC: 711,719	1

END OF FIGURE

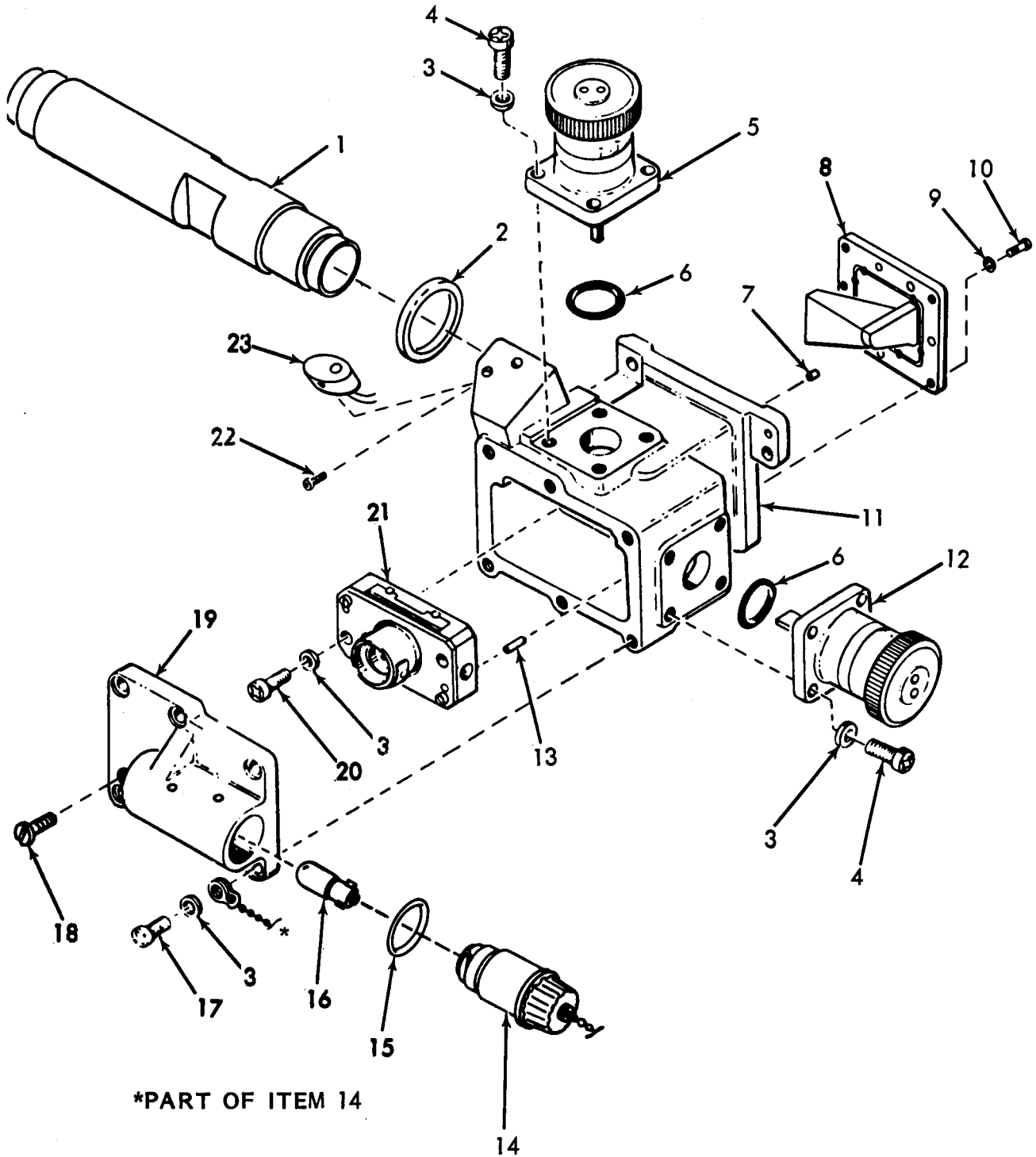


Figure 10. Body assembly (infrared) 11743800 (partial view-back)

## SECTION II

TM9-1240-379-34P

(1) ITEM NO	(2) SMR CODE	(3) FSCM	(4) PART NUMBER	(5) DESCRIPTION AND USABLE ON CODE (UOC)	(6) QTY
				GROUP 03 BODY ASSEMBLY (INFRARED) 11743800	
				FIG. 10 BODY ASSEMBLY (INFRARED) 11743800 (PARTIAL VIEW-BACK)	
1	XBDZZ	19200	8213392	TUBE, PERISCOPE UOC: 711,719	1
2	PADZZ	19200	10514353	PACKING, PREFORMED UOC: 711,719	1
3	PAOZZ	96906	MS35333-71	WASHER, LOCK UOC: 711,719	16
4	PAFZZ	96906	MS51957-28	SCREW, MACHINE UOC: 711,719	8
5	PAFZZ	19200	11727414	KNOB ASSEMBLY UOC: 711,719	1
6	PAFZZ	19200	8205653	PACKING, PREFORMED UOC: 711,719	2
7	PADZZ	96906	MS9105-55	PIN, STRAIGHT UOC: 711,719	2
8	PADZZ	19200	10554536	PRISM, OPTICAL INSTRUMENT UOC: 711,719	1
9	PADZZ	96906	MS35333-69	WASHER, LOCK UOC: 711,719	8
10	PADZZ	96906	MS51957-4	SCREW, MACHINE UOC: 711,719	8
11	XBDZZ	19200	8620033	HOUSING UOC: 711,719	1
12	PAFZZ	19200	11727413	KNOB ASSEMBLY UOC: 711,719	1
13	PADZZ	96906	MS16555-629	PIN, STRAIGHT UOC: 711,719	2
14	PAOZZ	19200	10515991	LAMPHOLDER, PLUG UOC: 711,719	1
15	PAOZZ	19200	8621038	PACKING, PREFORMED UOC: 711,719	1
16	PAOZZ	96906	MS25231-313	LAMP, INCANDESCENT UOC: 711,719	1
17	PAOZZ	96906	MS51957-30	SCREW, MACHINE UOC: 711,719	6
18	PAOZZ	96906	MS3212-23	SCREW UOC: 711,719	1
19	XBFZZ	19200	10516007	COVER ASSEMBLY UOC: 711,719	1
20	PADZZ	96906	MS51957-33	SCREW, MACHINE UOC: 711,719	2
21	PADDD	19200	11727426	RETICLE ASSEMBLY UOC: 711,719	1
22	PAHZZ	96906	MS51973-8	SETSCREW UOC: 711,719	1
23	PAHZZ	19200	8635152	CONTACT	1

SECTION II

TM9-1240-379-34P

(1) ITEM NO	(2) SMR CODE	(3) FSCM	(4) PART NUMBER	(5) DESCRIPTION AND USABLE ON CODE (UOC)	(6) QTY
-------------------	--------------------	-------------	-----------------------	---	------------

UOC:711,719

END OF FIGURE



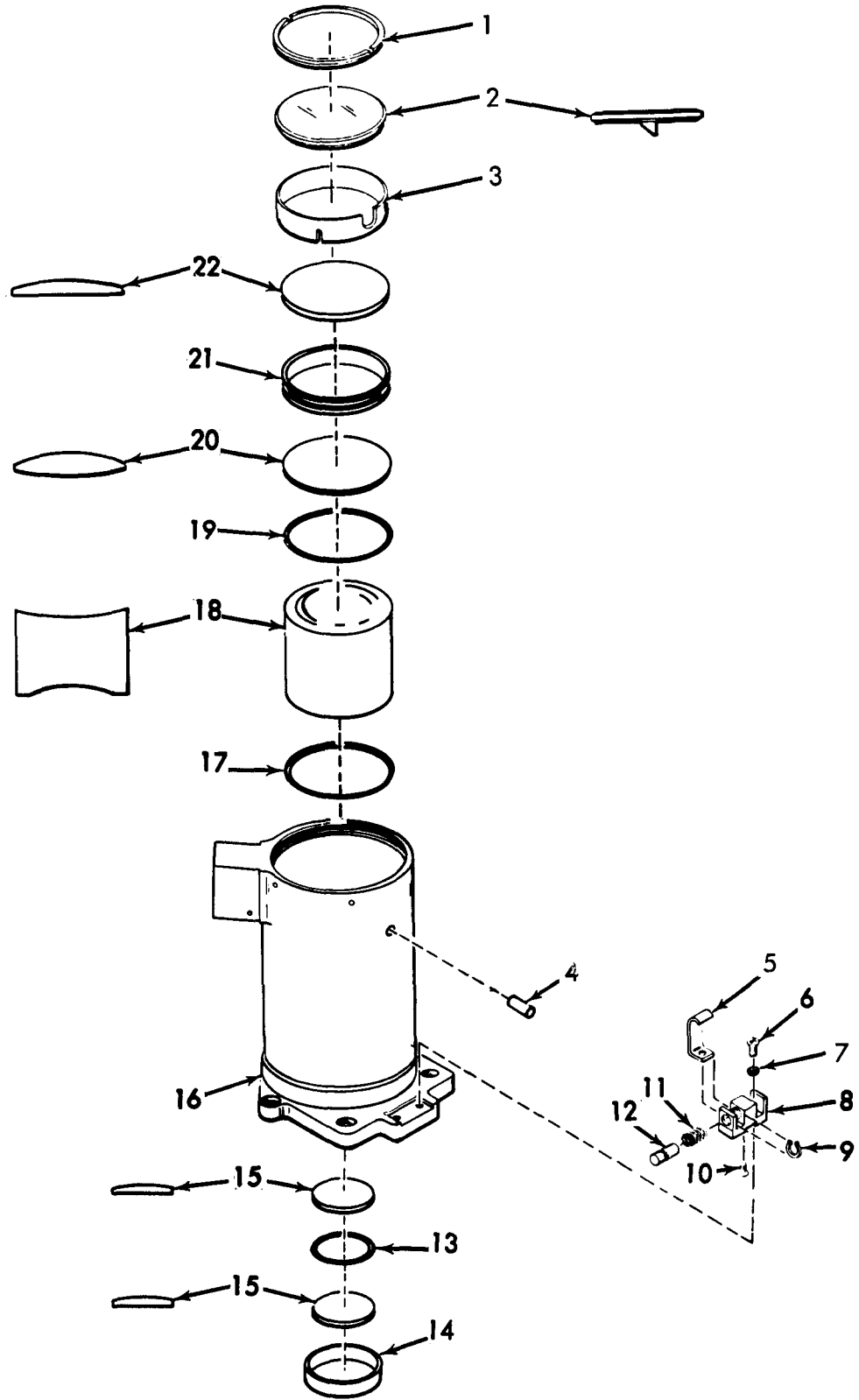


Figure 11. Optical cell assembly 10548202

## SECTION II

TM9-1240-379-34P

(1) ITEM NO	(2) SMR CODE	(3) FSCM	(4) PART NUMBER	(5) DESCRIPTION AND USABLE ON CODE (UOC)	(6) QTY
GROUP 0301 OPTICAL CELL ASSEMBLY 10548202					
FIG. 11 OPTICAL CELL ASSEMBLY					
1	PADZZ	19200	10514583	RING, EXTERNALLY THREADED UOC:711,719	1
2	PADZZ	19200	10514282	PRISM, BONDED UOC:711,719	1
3	XBDZZ	19200	8213376	SPACER UOC:711,719	1
4	XADZZ	96906	MS9105-01	PIN, STRAIGHT UOC:711,719	1
5	PAFZZ	19200	8289305	BRACKET, BODY ASSEMBLY UOC:711,719	1
6	PAFZZ	96906	MS51959-28	SCREW, MACHINE UOC:711,719	2
7	PAFZZ	96906	MS122158	INSERT, SCREW THREAD UOC:711,719	2
8	PAFZZ	19200	8289282	KEY, MACHINE UOC:711,719	1
9	PAFZZ	96906	MS16624-1018	RING, RETAINING UOC:711,719	1
10	PAFZZ	96906	MS51960-16	SCREW, MACHINE UOC:711,719	1
11	PAFZZ	19200	8289303	SPRING, HELICAL UOC:711,719	1
12	PAFZZ	19200	8289302	PLUNGER, DETENT UOC:711,719	1
13	XBDZZ	19200	8213373	SPACER UOC:711,719	1
14	PBDZZ	19200	8635182	RING, RETAINING UOC:711,719	1
15	PADZZ	19200	8213367	LENS, OPTICAL INSTRUMENT UOC:711,719	2
16	XADZZ	19200	10548312	CELL UOC:711,719	1
17	XBDZZ	19200	8213379	SPACER UOC:711,719	1
18	PBDZZ	19200	8213366	LENS, OPTICAL UOC:711,719	1
19	XBDZZ	19200	10556517	SPACER UOC:711,719	1
20	PBDZZ	19200	8213365	LENS, OPTICAL UOC:711,719	1
21	XBDZZ	19200	8213375	SPACER UOC:711,719	1
22	PADZZ	19200	8213364	LENS, OPTICAL INSTRUMENT UOC:711,719	1

END OF FIGURE

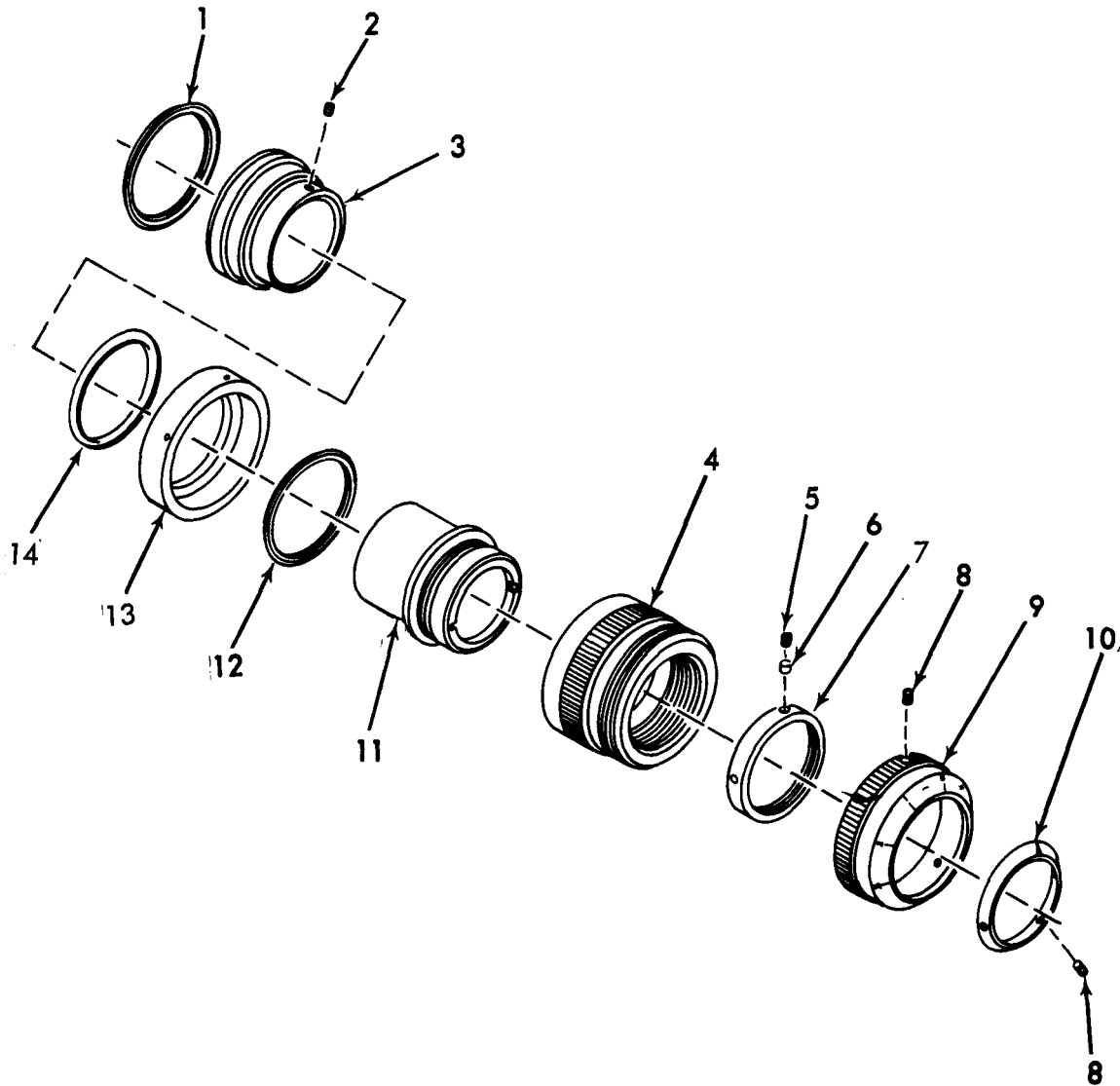


Figure 12. Eyepiece assembly 10516734



## SECTION II

TM9-1240-379-34P

(1) ITEM NO	(2) SMR CODE	(3) FSCM	(4) PART NUMBER	(5) DESCRIPTION AND USABLE ON CODE (UOC)	(6) QTY
				GROUP 0302 EYEPIECE ASSEMBLY 10516734	
				FIG. 12 EYEPIECE ASSEMBLY 10516734	
1	PADZZ	19200	10514302	PACKING, PREFORMED UOC: 711, 719	1
2	PADZZ	19200	10514234	SETSCREW UOC: 711, 719	1
3	XBDZZ	19200	10516714	RETAINER UOC: 711, 719	1
4	XBDZZ	19200	10514317	ADAPTER UOC: 711, 719	1
5	PADZZ	19200	10541760	SETSCREW UOC: 711, 719	3
6	PADZZ	19200	8620836	DISK, SOLID, PLAIN UOC: 711, 719	3
7	PADZZ	19200	10514314	NUT, PLAIN, ROUND UOC: 711, 719	1
8	PADZZ	96906	MS51029-1	SETSCREW UOC: 711, 719	5
9	PADZZ	19200	10516722	DIAL, SCALE UOC: 711, 719	1
10	PADZZ	19200	10516721	POINTER, DIAL UOC: 711, 719	1
11	PADZZ	19200	10516732	CELL ASSEMBLY, OPTICAL UOC: 711, 719	1
12	PADZZ	19200	10514301	PACKING, PREFORMED UOC: 711, 719	1
13	XBDZZ	19200	10515845	RING UOC: 711, 719	1
14	PADZZ	19200	8565572	WASHER, SPRING TENSION UOC: 711, 719	1

END OF FIGURE

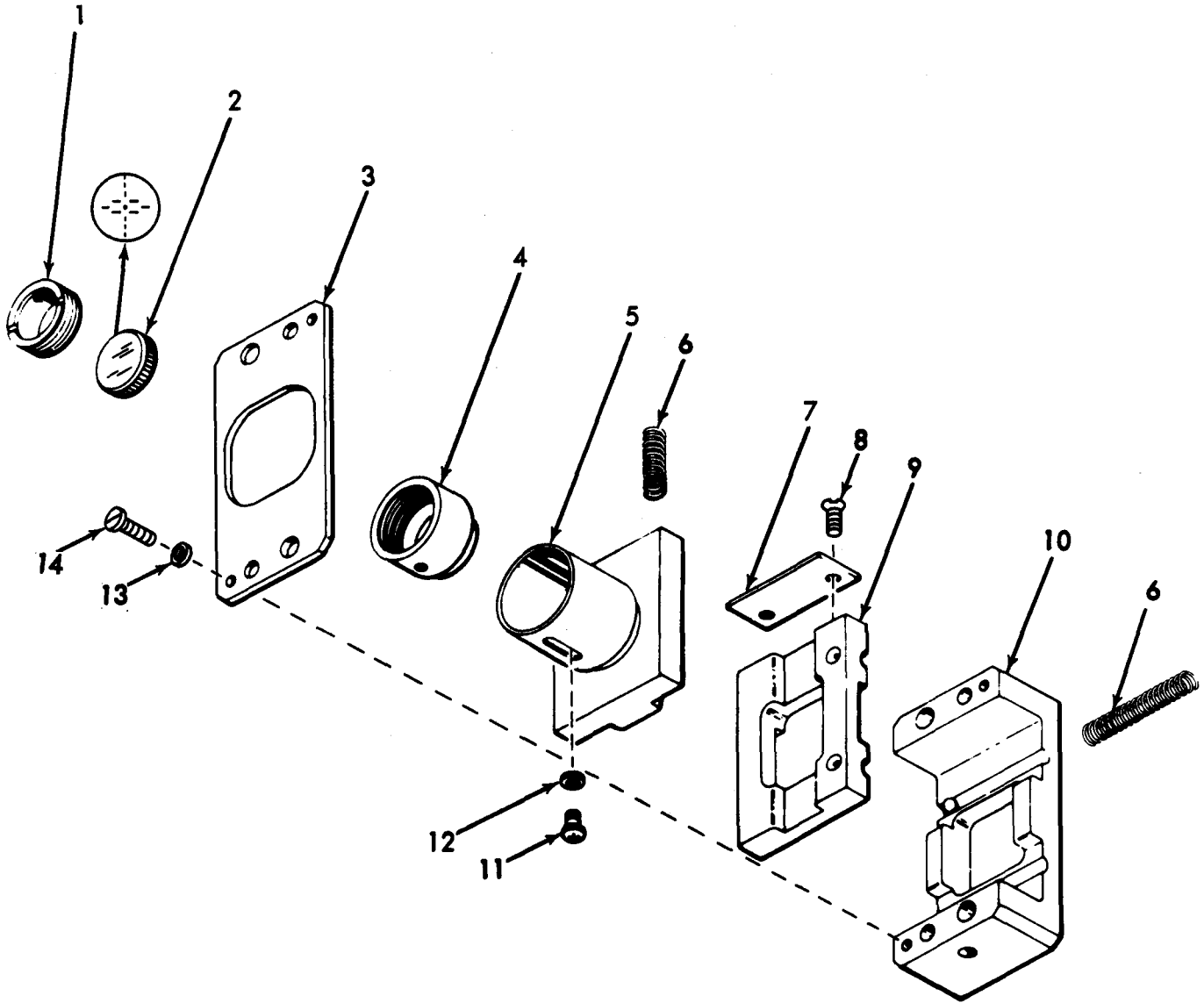


Figure 13. Reticle assembly 11727426

## SECTION II

TM9-1240-379-34P

(1) ITEM NO	(2) SMR CODE	(3) FSCM	(4) PART NUMBER	(5) DESCRIPTION AND USABLE ON CODE (UOC)	(6) QTY
				GROUP 0303 OR 0405 RETICLE ASSEMBLY 11727426	
				FIG. 13 RETICLE ASSEMBLY 11727426	
1	XADZZ	19200	8619445	RING, EXTERNALLY THREADED	1
2	PADZZ	19200	10514295	RETICLE, OPTICAL	1
3	XBDZZ	19200	8619440	COVER	1
4	XBDZZ	19200	8619446	CELL	1
5	XBDZZ	19200	8619444	HOLDER	1
6	PADZZ	19200	8289256	SPRING, HELICAL	4
7	XBDZZ	19200	10514330	PLATE	1
8	PADZZ	96906	MS51959-3	SCREW, MACHINE	2
9	XBDZZ	19200	8619438	SLIDE	1
10	XBDZZ	19200	8619436	SUPPORT	1
11	PADZZ	96906	MS51958-1	SCREW, MACHINE	2
12	XDDZZ	19200	11727418	WASHER, SPRING	2
13	PADZZ	96906	MS35338-134	WASHER, LOCK	2
14	PADZZ	96906	MS51957-5	SCREW, MACHINE	2

END OF FIGURE

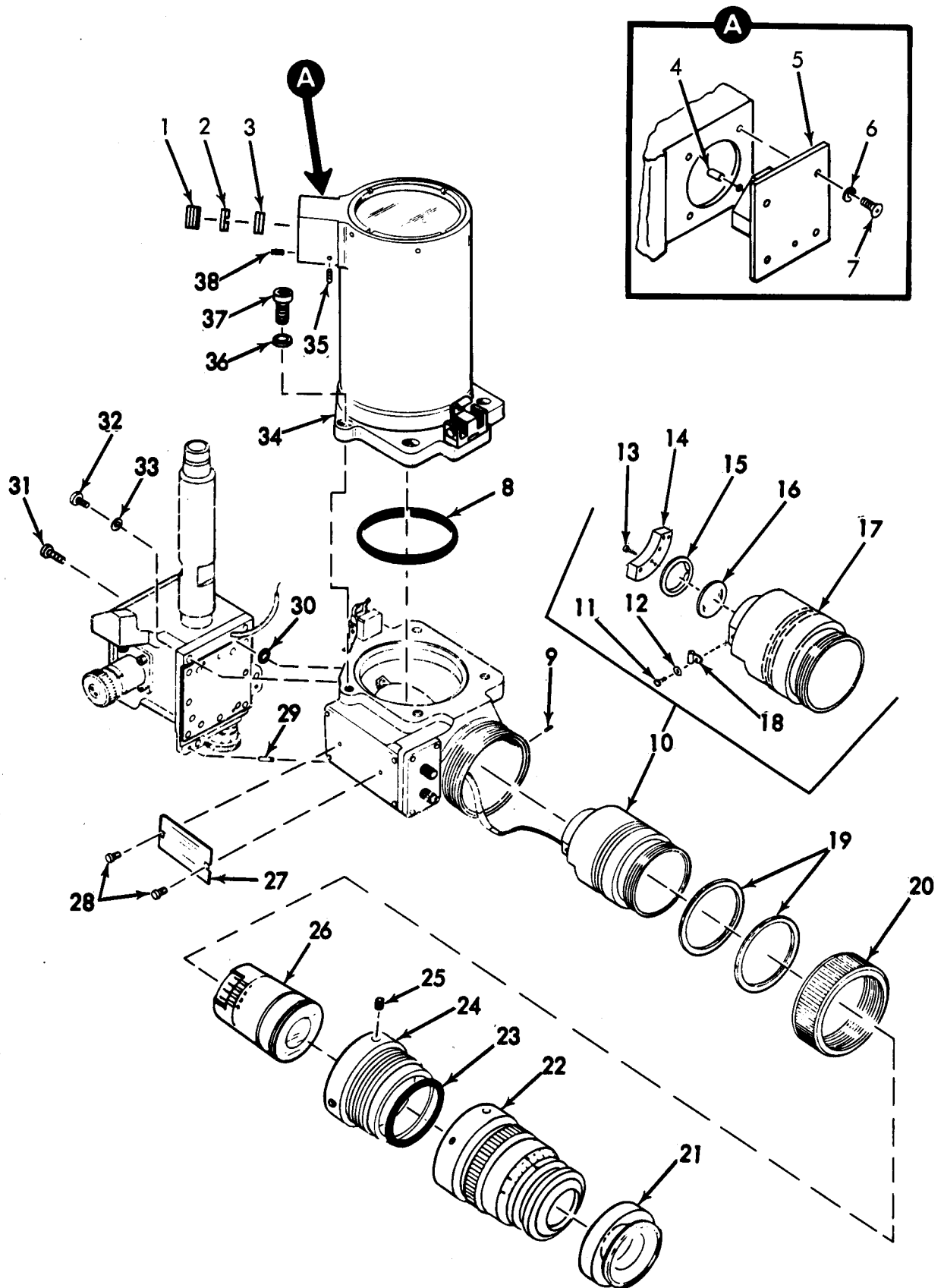


Figure 14. Elbow assembly (passive) 11733401 and Adapter assembly 11733480

## SECTION II

TM9-1240-379-34P

(1) ITEM NO	(2) SMR CODE	(3) FSCM	(4) PART NUMBER	(5) DESCRIPTION AND USABLE ON CODE (UOC)	(6) QTY
				GROUP 04 ELBOW ASSEMBLY (PASSIVE) 11733401 AND GROUP 0403 ADAPTER ASSEMBLY 11733480	
				FIG. 14 ELBOW ASSEMBLY (PASSIVE) 11733401 AND ADAPTER ASSEMBLY 11733840	
1	XBDZZ	19200	10514581	PLUG ASSEMBLY UOC:F33,L32	1
2	PADZZ	19200	10554535	RETAINER,OPTICAL UOC:F33,L32	1
3	PADZZ	19200	10514272	LENS,OPTICAL UOC:F33,L32	1
4	XBDZZ	96906	MS16555-618	PIN UOC:F33,L32	2
5	PADZZ	19200	10548309	MIRROR,BONDED UOC:F33,L32	1
6	PADZZ	96906	MS35335-57	WASHER,LOCK UOC:F33,L32	4
7	PADZZ	96906	MS51957-13	SCREW,MACHINE UOC:F33,L32	4
8	PADZZ	96906	MS9021-238	PACKING,PREFORMED UOC:F33,L32	1
9	PADZZ	96906	MS51045-49	SETSCREW UOC:F33,L32	1
10	PADDD	19200	11733480	CELL ASSEMBLY, OPTICAL UOC:F33,L32	1
11	PADZZ	96906	MS51957-13	SCREW,MACHINE UOC:F33,L32	1
12	PADZZ	96906	MS15795-804	WASHER,FLAT UOC:F33,L32	1
13	PADZZ	96906	MS35275-208	SCREW,MACHINE UOC:F33,L32	2
14	PADZZ	19200	11733457	CABLE,IMAGE TUBE UOC:F33,L32	1
15	PADZZ	19200	11733474	RETAINER,OPTICAL UOC:F33,L32	1
16	PADZZ	19200	11733418	LENS,OPTICAL INSTRUMENT UOC:F33,L32	1
17	XADZZ	19200	11733456	ADAPTER,TUBE UOC:F33,L32	1
18	PADZZ	19200	8215854-1	CLAMP,LOOP UOC:F33,L32	1
19	PADZZ	19200	11731144-6	PACKING,PREFORMED UOC:F33,L32	2
20	XBDZZ	19200	11733436	RING UOC:F33,L32	1
21	PAFZZ	19200	11733438	EYESHIELD,OPTICAL UOC:F33,L32	1
22	PAFDD	19200	11733402	EYEPiece ASSEMBLY	1

## SECTION II

TM9-1240-379-34P

(1) ITEM NO	(2) SMR CODE	(3) FSCM	(4) PART NUMBER	(5) DESCRIPTION AND USABLE ON CODE (UOC)	(6) QTY
23	PAFZZ	96906	MS9021-038	UOC:F33,L32 PACKING,PREFORMED	1
24	XBFZZ	19200	11733437	UOC:F33,L32 ADAPTER,THREADED	1
25	PAFZZ	96906	MS51964-29	UOC:F33,L32 SETSCREW	3
26	PAFDD	80058	MX9644UV	UOC:F33,L32 IMAGE INTENSIFIER	1
27	XBDZZ	19200	11733455	UOC:F33,L32 PLATE	1
28	PADZZ	96906	MS51957-11	UOC:F33,L32 SREW,MACHINE	2
29	XBDZZ	96906	MS16555-627	UOC:F33,L32 PIN	1
30	PADZZ	96906	MS9021-008	UOC:F33,L32 PACKING,PREFORMED	1
31	PADZZ	96906	MS3212-23	UOC:F33,L32 SCREW,MACHINE	1
32	PADZZ	96906	MS51957-64	UOC:F33,L32 SCREW,MACHINE	4
33	PADZZ	96906	MS35333-73	UOC:F33,L32 WASHER,LOCK	4
34	PADDD	19200	11733403	UOC:F33,L32 CELL,PRISM	1
35	PADZZ	96906	MS51029-9	UOC:F33,L32 SETSCREW	3
36	PADZZ	96906	MS35333-74	UOC:F33,L32 WASHER,LOCK	4
37	PADZZ	96906	MS16995-49	UOC:F33,L32 SCREW,CAP, SOCKET HEAD	4
38	PADZZ	96906	MS51029-27	UOC:F33,L32 SETSCREW	1

END OF FIGURE



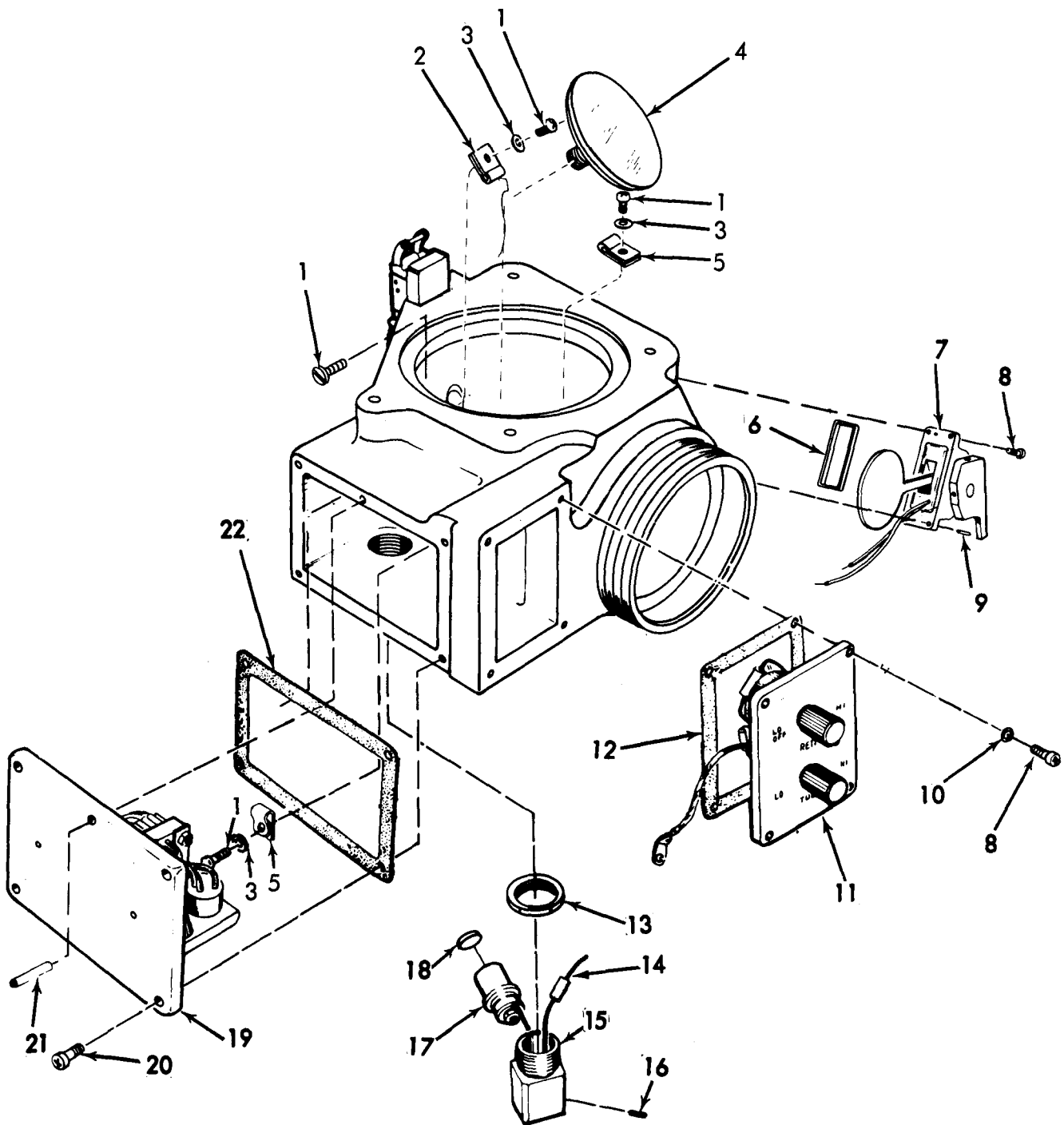


Figure 15. Elbow assembly (passive) 11733401 (partial view-top)



## SECTION II

TM9-1240-379-34P

(1) ITEM NO	(2) SMR CODE	(3) FSCM	(4) PART NUMBER	(5) DESCRIPTION AND USABLE ON CODE (UOC)	(6) QTY
				GROUP 04 ELBOW ASSEMBLY (PASSIVE) 11733401	
				FIG. 15 ELBOW ASSEMBLY (PASSIVE) 11733401 (PARTIAL VIEW-TOP)	
1	PADZZ	96906	MS51957-14	SCREW, MACHINE UOC:F33,L32	4
2	PADZZ	19200	8215854	CLAMP UOC:F33,L32	1
3	PADZZ	96906	MS15795-804	WASHER, FLAT UOC:F33,L32	3
4	PADZZ	19200	11733410	MIRROR, BONDED UOC:F33,L32	1
5	PADZZ	19200	8215854-1	CLAMP, LOOP UOC:F33,L32	2
6	PAHZZ	96906	MS9021-030	PACKING, PREFORMED UOC:F33,L32	1
7	PADZZ	19200	11733484	SHUTTER ASSEMBLY UOC:F33,L32	1
8	PAHZZ	96906	MS51957-28	SCREW, MACHINE UOC:F33,L32	8
9	PADZZ	96906	MS16555-604	PIN UOC:F33,L32	2
10	PAHZZ	96906	MS35333-71	WASHER, LOCK UOC:F33,L32	4
11	PAHHH	19200	11747182	SWITCH ASSEMBLY UOC:F33,L32	1
12	PAHZZ	19200	11747184	GASKET UOC:F33,L32	1
13	PADZZ	96906	MS25082C11	NUT, PLAIN, HEXAGON UOC:F33,L32	1
14	PADZZ	19200	11733495	SEMICONDUCTOR DEVICE UOC:F33,L32	1
15	XADZZ	19200	11747189	HOUSING UOC:F33,L32	1
16	PADZZ	96906	MS51963-9	SETSCREW UOC:F33,L32	2
17	PADZZ	19200	11733493	CONNECTOR UOC:F33,L32	1
18	XBDZZ	81349	M5501-7F12	CAP-PLUG UOC:F33,L32	1
19	PAHZZ	19200	11747171	REGULATOR ASSEMBLY UOC:F33,L32	1
20	PAFZZ	96906	MS51959-28	SCREW, MACHINE UOC:F33,L32	4
21	PAFZZ	96906	MS16562-190	PIN, SPRING UOC:F33,L32	1
22	PAHZZ	19200	11733499	GASKET, FLAT UOC:F33,L32	1

END OF FIGURE

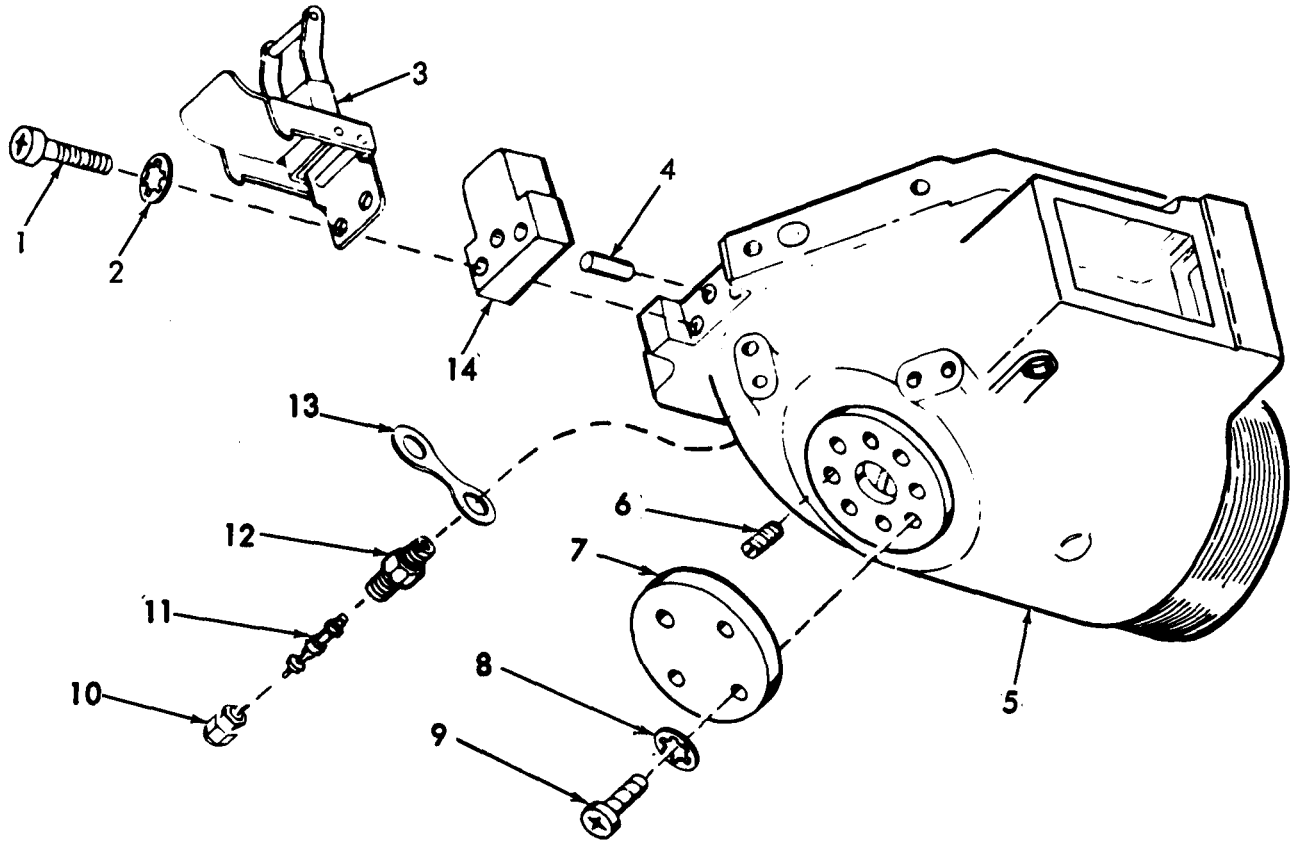


Figure 16. Elbow assembly (passive) 11733401 (partial view-bottom)

## SECTION II

TM9-1240-379-34P

(1) ITEM NO	(2) SMR CODE	(3) FSCM	(4) PART NUMBER	(5) DESCRIPTION AND USABLE ON CODE (UOC)	(6) QTY
				GROUP 04 ELBOW ASSEMBLY (PASSIVE) 11733401	
				FIG. 16 ELBOW ASSEMBLY (PASSIVE) 11733401 (PARTIAL VIEW-BOTTOM)	
1	PAFZZ	96906	MS51957-31	SCREW,MACHINE UOC:F33,L32	2
2	PAFZZ	96906	MS35333-71	WASHER,LOCK UOC:F33,L32	2
3	PAFZZ	19200	11727073-1	LATCH,PERISCOPE UOC:F33,L32	1
4	XBDZZ	96906	MS16555-627	PIN UOC:F33,L32	1
5	XADZZ	19200	11733454	HOUSING UOC:F33,L32	1
6	PADZZ	96906	MS51965-31	SETSCREW UOC:F33,L32	4
7	XBDZZ	19200	10514576	COVER UOC:F33,L32	1
8	PADZZ	96906	MS35333-72	WASHER,LOCK UOC:F33,L32	4
9	PADZZ	96906	MS51957-44	SCREW,MACHINE UOC:F33,L32	4
10	PAOZZ	19200	8200055	CAP,PNEUMATIC VALVE UOC:F33,L32	1
11	PAFZZ	96906	MS51377-2	VALVE CORE UOC:F33,L32	1
12	PAFZZ	96906	MS51607-1	VALVE STEM,PURGING UOC:F33,L32	1
13	PAFZZ	19200	10516567	STRAP, VALVE CAP UOC:F33,L32	1
14	PADZZ	19200	8213390	KEY UOC:F33,L32	1

END OF FIGURE

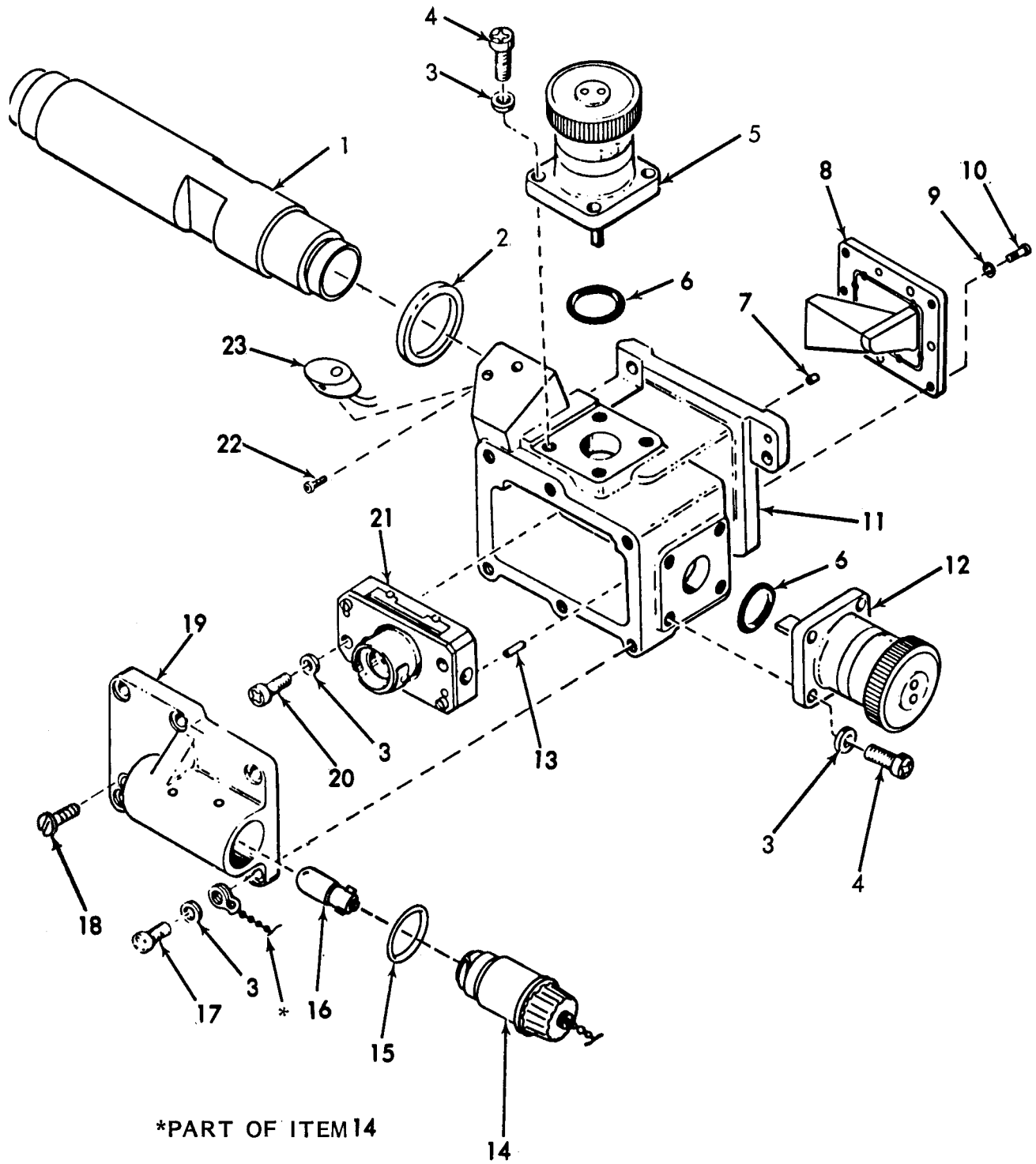


Figure 17. Elbow telescope (passive) 11733401 (partial view-back)

## SECTION II

TM9-1240-379-34P

(1) ITEM NO	(2) SMR CODE	(3) FSCM	(4) PART NUMBER	(5) DESCRIPTION AND USABLE ON CODE (UOC)	(6) QTY
				GROUP 04 ELBOW ASSEMBLY (PASSIVE) 11733401	
				FIG. 17 ELBOW ASSEMBLY (PASSIVE) 11733401 (PARTIAL VIEW-BACK)	
1	XBDZZ	19200	8213392	TUBE, PERISCOPE UOC: F33, L32	1
2	PADZZ	19200	10514353	PACKING, PREFORMED UOC: F33, L32	1
3	PAOZZ	96906	MS35333-71	WASHER, LOCK UOC: F33, L32	16
4	PAFZZ	96906	MS51957-28	SCREW, MACHINE UOC: F33, L32	8
5	PAFZZ	19200	11727414	KNOB ASSEMBLY UOC: F33, L32	1
6	PAFZZ	96906	MS9021-114	PACKING, PREFORMED UOC: F33, L32	1
7	PADZZ	96906	MS9105-53	PIN, STRAIGHT UOC: F33, L32	2
8	PADZZ	19200	10554536	PRISM, OPTICAL INSTRUMENT UOC: F33, L32	1
9	PADZZ	96906	MS35333-69	WASHER, LOCK UOC: F33, L32	8
10	PADZZ	96906	MS51957-4	SCREW, MACHINE UOC: F33, L32	8
11	XBDZZ	19200	8620033	HOUSING UOC: F33, L32	1
12	PAFZZ	19200	11727413	KNOB ASSEMBLY UOC: F33, L32	1
13	PADZZ	96906	MS16555-629	PIN UOC: F33, L32	2
14	PAOZZ	19200	10515991	LAMPHOLDER, PLUG UOC: F33, L32	1
15	PAOZZ	96906	MS9021-116	PACKING, PREFORMED UOC: F33, L32	1
16	PAOZZ	19200	11747186	BULB, BAYONET UOC: F33, L32	1
17	PAOZZ	96906	MS51957-30	SCREW, MACHINE UOC: F33, L32	6
18	PAOZZ	96906	MS3212-23	SCREW UOC: F33, L32	1
19	XDFZZ	19200	11729247	COVER ASSEMBLY UOC: F33, L32	1
20	PADZZ	96906	MS51957-33	SCREW, MACHINE UOC: F33, L32	2
21	PADDD	19200	11727426	RETICLE ASSEMBLY UOC: F33, L32	1
22	PAHZZ	96906	MS51973-8	SETSCREW UOC: F33, L32	1
23	XBHZZ	19200	11733497	CONTACT	1

SECTION II

TM9-1240-379-34P

(1) ITEM NO	(2) SMR CODE	(3) FSCM	(4) PART NUMBER	(5) DESCRIPTION AND USABLE ON CODE (UOC)	(6) QTY
-------------------	--------------------	-------------	-----------------------	---	------------

UOC:F33,L32

END OF FIGURE



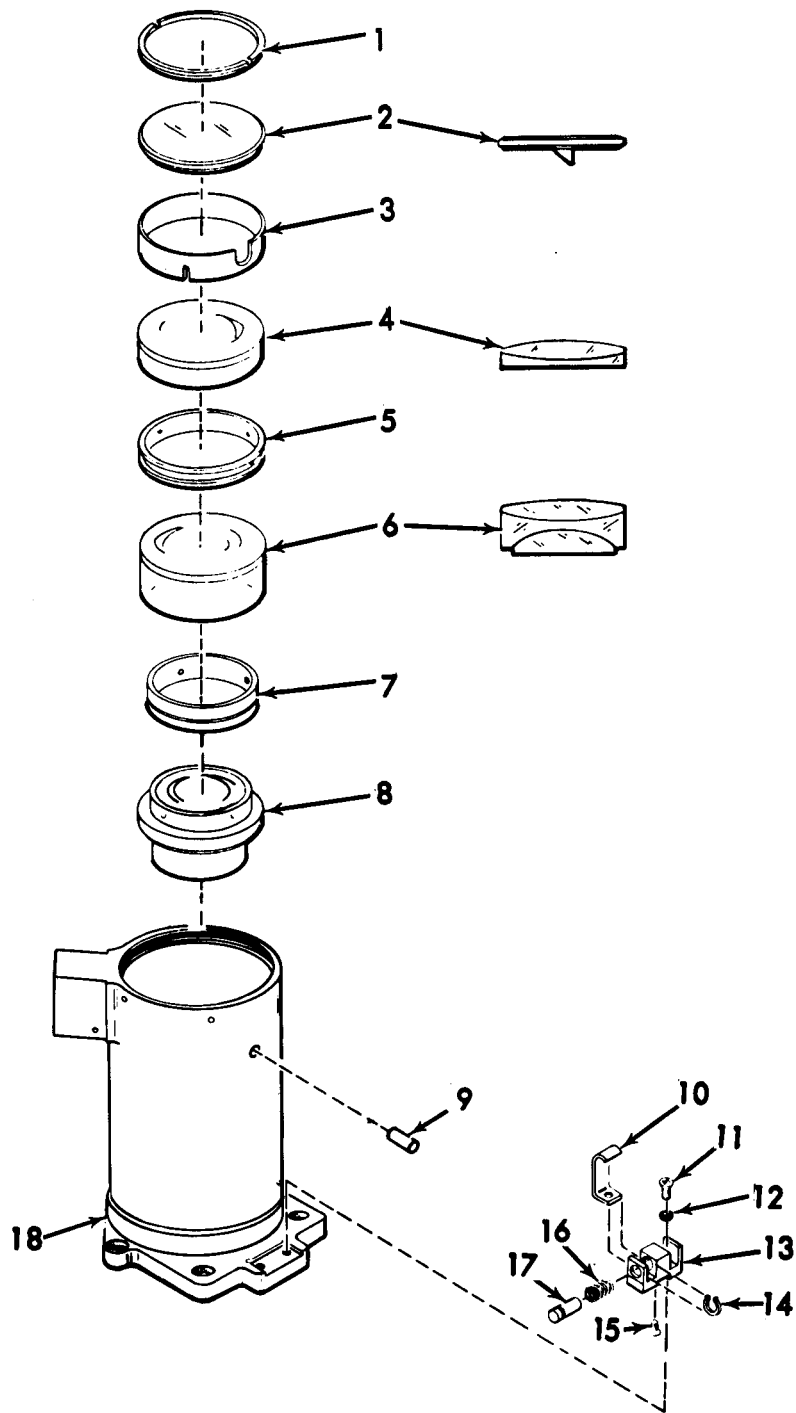


Figure 18. Prism cell 11733403



## SECTION II

TM9-1240-379-34P

(1) ITEM NO	(2) SMR CODE	(3) FSCM	(4) PART NUMBER	(5) DESCRIPTION AND USABLE ON CODE (UOC)	(6) QTY
GROUP 0401 PRISM CELL 11733403					
FIG. 18 PRISM CELL 11733403					
1	PADZZ	19200	10514583	RING, EXTERNALLY THREADED UOC: F33, L32	1
2	PADZZ	19200	11733404	PRISM, OPTICAL INSTRUMENT UOC: F33, L32	1
3	XBDZZ	19200	11733412	SPACER UOC: F33, L32	1
4	PBDZZ	19200	11733406	LENS, OPTICAL UOC: F33, L32	1
5	XBDZZ	19200	11733413	SPACER UOC: F33, L32	1
6	PADZZ	19200	11733407	LENS, OPTICAL INSTRUMENT UOC: F33, L32	1
7	XBDZZ	19200	10554963	SPACER UOC: F33, L32	1
8	PBDZZ	19200	11733414	CELL ASSEMBLY, OPTICAL UOC: F33, L32	1
9	XADZZ	96906	MS9105-01	PIN, STRAIGHT, HEADLESS UOC: F33, L32	1
10	PAFZZ	19200	11729248	STRIKE, CATCH UOC: F33, L32	1
11	PAFZZ	96906	MS51959-28	SCREW, MACHINE UOC: F33, L32	2
12	PAFZZ	96906	MS122158	INSERT, SCREW THREAD UOC: F33, L32	2
13	PAFZZ	19200	8289282	KEY, MACHINE UOC: F33, L32	1
14	PAFZZ	96906	MS16624-5018	RING, RETAINING UOC: F33, L32	1
15	PAFZZ	96906	MS51960-16	SCREW, MACHINE UOC: F33, L32	1
16	PAFZZ	19200	8289303	SPRING, HELICAL COMPRESSION UOC: F33, L32	1
17	PAFZZ	19200	8289302	PLUNGER, DETENT UOC: F33, L32	1
18	XBDZZ	19200	11733417	CELL UOC: F33, L32	1

END OF FIGURE

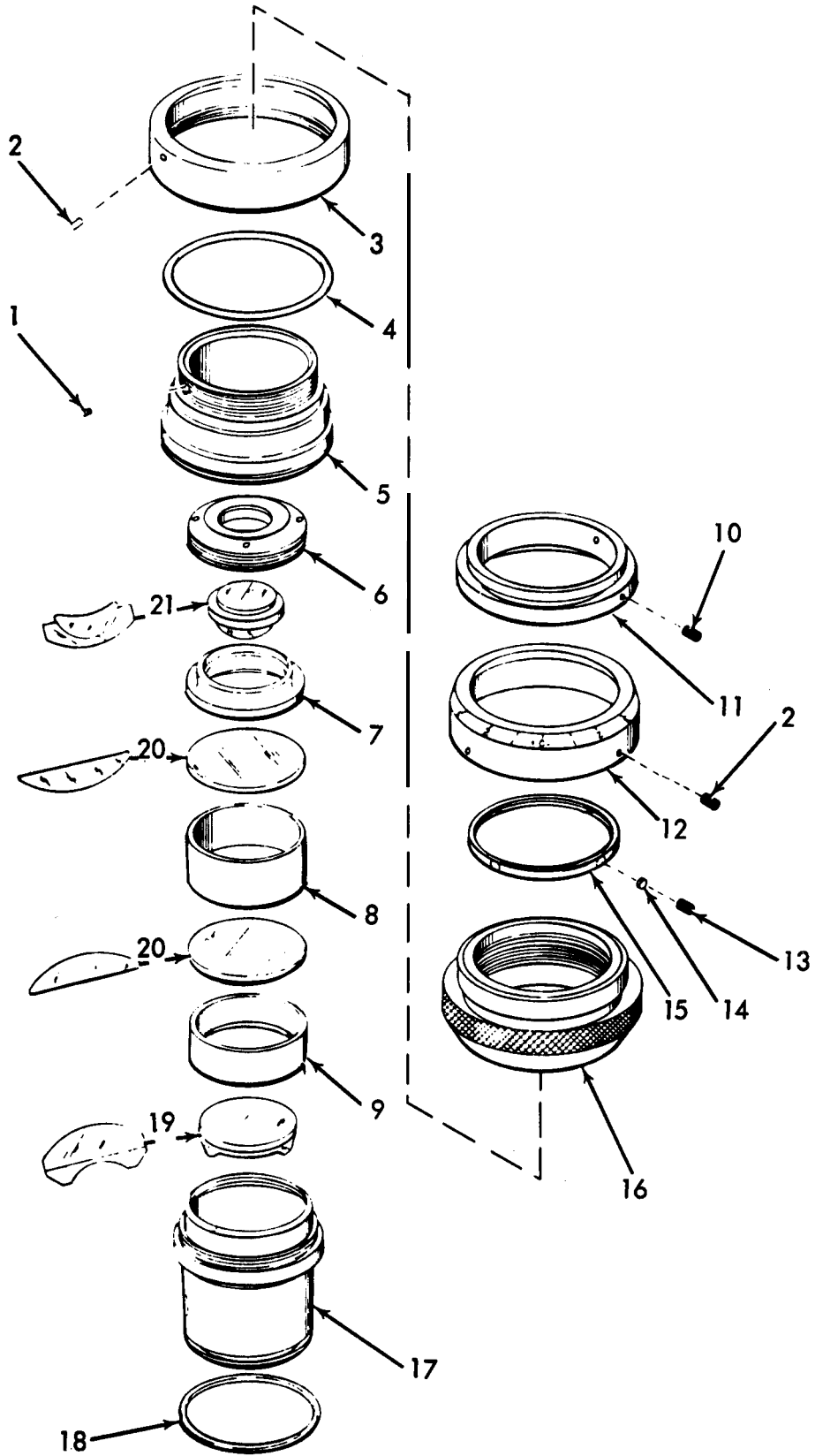


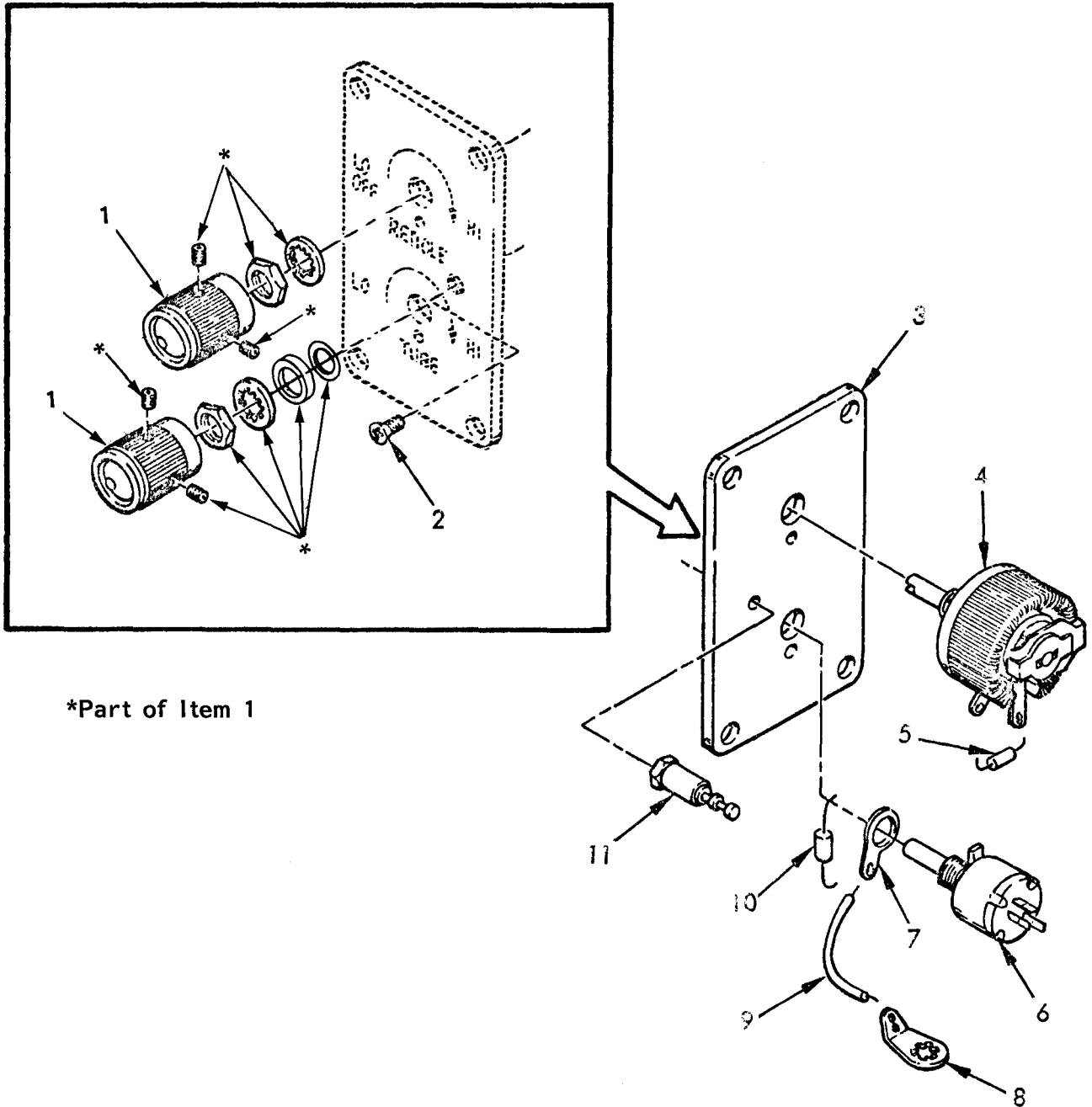
Figure 19. Eyepiece assembly 11733402

## SECTION II

TM9-1240-379-34P

(1) ITEM NO	(2) SMR CODE	(3) FSCM	(4) PART NUMBER	(5) DESCRIPTION AND USABLE ON CODE (UOC)	(6) QTY
				GROUP 0402 EYEPIECE ASSEMBLY 11733402	
				FIG. 19 EYEPIECE ASSEMBLY 11733402	
1	PADZZ	19200	11733423	PIN, STRAIGHT, HEADED UOC: F33, L32	1
2	PAFZZ	96906	MS51963-9	SETSCREW UOC: F33, L32	5
3	XDDZZ	19200	11733427	RING UOC: F33, L32	1
4	PADZZ	96906	MS9021-038	PACKING, PREFORMED UOC: F33, L32	1
5	XDDZZ	19200	11733425	CELL UOC: F33, L32	1
6	PADZZ	19200	11733433	RETAINER, OPTICAL ELEMENT UOC: F33, L32	1
7	XDDZZ	19200	11733432	SPACER UOC: F33, L32	1
8	XDDZZ	19200	11733430	SPACER UOC: F33, L32	1
9	XDDZZ	19200	11733428	SPACER UOC: F33, L32	1
10	PAFZZ	96906	MS51963-10	SETSCREW UOC: F33, L32	2
11	XDFZZ	19200	11733434	INDEX UOC: F33, L32	1
12	PAFZZ	19200	11733429	SCALE, DIOPTER UOC: F33, L32	1
13	PADZZ	19200	11731239	SETSCREW UOC: F33, L32	2
14	PADZZ	19200	8620836	DISK, SOLID, PLAIN UOC: F33, L32	2
15	XBDZZ	19200	11733431	NUT, PLAIN, ROUND UOC: F33, L32	1
16	XDDZZ	19200	11733424	ADAPTER UOC: F33, L32	1
17	XADZZ	19200	11733426	CELL UOC: F33, L32	1
18	PADZZ	19200	11731144-5	PACKING, PREFORMED UOC: F33, L32	1
19	PADZZ	19200	11733419	LENS, OPTICAL INSTRUMENT UOC: F33, L32	1
20	PADZZ	19200	11733420	LENS, OPTICAL INSTRUMENT UOC: F33, L32	2
21	PADZZ	19200	11733421	LENS, OPTICAL UOC: F33, L32	1

END OF FIGURE



\*Part of Item 1

Figure 20. Switch assembly 11747182

## SECTION II

TM9-1240-379-34P

(1) ITEM NO	(2) SMR CODE	(3) FSCM	(4) PART NUMBER	(5) DESCRIPTION AND USABLE ON CODE (UOC)  GROUP 0404 SWITCH ASSEMBLY 11747182  FIG. 20 SWITCH ASSEMBLY 11747182	(6) QTY
1	PAHZZ	96906	MS91528-0E1B	KNOB UOC:F33,L32	2
2	PAHZZ	96906	MS51959-13	SCREW,MACHINE UOC:F33,L32	1
3	XAHZZ	19200	11747183	PLATE UOC:F33,L32	1
4	PAHZZ	81349	RP062SB100KK	RESISTOR,VARIABLE UOC:F33,L32	1
5	PAHZZ	81349	RCR05G102JS	RESISTOR,FIXED UOC:F33,L32	1
6	PAHZZ	19200	11747185	RESISTOR,VARIABLE UOC:F33,L32	1
7	PAHZZ	19200	11733470	TERMINAL,LUG UOC:F33,L32	1
8	PAHZZ	96906	MS77068-1	TERMINAL,LUG UOC:F33,L32	1
9	MHHZZ	81349	M16878/1BFE9	WIRE MAKE FROM PN M16878/1BFE9 UOC:F33,L32	1
10	PAHZZ	81349	RCR07G474JS	RESISTOR,FIXED UOC:F33,L32	1
11	PAHZZ	81349	SE20XD01	TERMINAL,STUD UOC:F33,L32	1
END OF FIGURE					



SECTION II

TM9-1240-379-34P

(1) ITEM NO	(2) SMR CODE	(3) FSCM	(4) PART NUMBER	(5) DESCRIPTION AND USABLE ON CODE (UOC)	(6) QTY
				GROUP 99 BULK MATERIALS	
				FIG. BULK	
1	PAHZZ	81349	M23053/5-104-9	INSULATION SLEEVING UOC:F33,711,719	V
2	PAHZZ	81349	M7444-1-1-16	INSULATION SLEEVING UOC:F33,711,719	V
3	PAHZZ	81349	M16878/4BGE9	WIRE,ELECTRICAL UOC:F33,711,719	V
4	PAHZZ	81349	M16878/4BFEO	WIRE,ELECTRICAL	V
5	PAHZZ	81349	M16878/1BFE9	WIRE,ELECTRICAL UOC:F33,L32	V

END OF FIGURE

BULK-1





NATIONAL STOCK NUMBER AND PART NUMBER INDEX

STOCK NUMBER	NATIONAL STOCK NUMBER INDEX		STOCK NUMBER	FIG.	ITEM
	FIG.	ITEM			
5305-00-050-9230	7	23	2640-00-060-3543	4	42
	14	32		9	6
5305-00-050-9232	2	35		16	11
5305-00-051-4483	10	22	6145-00-062-6683	BULK	4
	17	22	5305-00-068-1653	4	13
5305-00-054-5638	10	10	5305-00-068-1655	8	4
	17	10	5340-00-068-1656	8	1
5305-00-054-5639	13	14	5330-00-068-3257	4	9
5305-00-054-5644	4	40	5310-00-068-3260	8	12
	14	28	5935-00-077-1686	8	2
5305-00-054-5646	1	1	1240-00-077-1688	8	17
	2	33	5960-00-082-3326	7	18
	7	12	5940-00-082-4652	20	11
5305-00-054-5647	7	8	5315-00-086-3393	4	2
	14	7		11	8
	14	11		18	13
5305-00-054-5648	15	1	5970-00-088-2975	BULK	1
5305-00-054-6651	2	28	5365-00-088-8865	11	1
	4	21		18	1
	4	21	5365-00-088-8890	2	12
5305-00-054-6652	8	19	5310-00-096-9728	2	15
	10	4	5305-00-097-8953	7	16
	15	8	5905-00-105-7767	20	10
	17	4	1240-00-109-4451	2	11
5305-00-054-6654	10	17	6250-00-111-6736	4	26
	17	17	1240-00-114-1096	2	17
5305-00-054-6655	3	5		4	43
	16	1		9	5
5305-00-054-6656	4	49		16	12
5305-00-054-6657	10	20	1240-00-115-4514	4	38
	17	20	1240-00-116-0613	4	45
5305-00-054-6667	3	31	1240-00-116-7015	4	38
	8	24	1240-00-117-2766	7	1
5305-00-054-6668	4	57	1240-00-121-0796	5	1
5305-00-054-6669	2	1	5310-00-125-3943	12	7
	3	7	5340-00-127-3006	2	8
	9	10	5310-00-128-7284	12	14
	16	9	1240-00-130-5584	7	15
5305-00-054-6670	2	5	1240-00-130-5585	7	14
	4	32	5855-00-138-2386	14	26
5315-00-056-9386	2	7	1240-00-148-7555	1	4
	3	11	1240-00-148-7556	1	3
5305-00-057-0497	13	11	6240-00-155-8714	4	28
5305-00-057-0524	3	34		10	16
5310-00-058-3599	7	7	1240-00-179-1384	7	19
	14	6	5365-00-200-5512	4	31
1240-00-059-5835	3	13	5310-00-209-1366	2	27
5330-00-060-0602	14	23		3	35
	19	4		9	2
2640-00-060-3543	2	14	1240-00-242-5701	8	13

NATIONAL STOCK NUMBER AND PART NUMBER INDEX

STOCK NUMBER	NATIONAL STOCK NUMBER INDEX		STOCK NUMBER	FIG.	ITEM
	FIG.	ITEM			
5940-00-271-7258	8	26	5305-00-524-0709	4	35
5305-00-282-7663	5	6	5305-00-527-5737	4	50
5330-00-291-5787	4	27	5305-00-531-0137	8	5
1240-00-391-8404	7	6	5310-00-543-2739	2	2
	14	5		16	8
1240-00-391-8412	10	12	5310-00-543-2740	7	27
	17	12		14	36
1240-00-391-8420	10	5	5310-00-543-4652	10	9
	17	5		17	9
1240-00-393-0271	18	2	5310-00-543-5933	2	37
1240-00-393-0281	18	4		7	24
1240-00-393-0312	18	6		14	33
1240-00-393-0319	14	14	5330-00-551-8252	15	6
1240-00-393-0327	14	15	5940-00-565-0072	20	7
1240-00-393-0338	18	8	5305-00-576-7266	3	25
1240-00-393-0413	14	16	5330-00-580-2275	17	6
1240-00-393-0417	19	19	5330-00-580-9763	14	8
1240-00-393-0437	19	20	5330-00-582-7484	17	15
1240-00-393-0439	19	21	5305-00-582-9063	5	8
1240-00-393-0441	19	12	5305-00-582-9064	4	15
1240-00-393-0442	14	21	5360-00-584-1395	4	6
1240-00-393-0446	14	22		11	11
1240-00-393-0447	15	4		18	16
1240-00-394-3108	10	21	5355-00-584-4133	5	10
	17	21	5305-00-584-4852	3	15
5340-00-400-2584	2	19	5310-00-596-7693	3	8
1240-00-406-1581	7	4		9	11
1240-00-415-6319	2	11	1240-00-602-5084	1	4
5365-00-432-3584	3	22	5935-00-604-7866	4	29
	4	7	5935-00-611-6495	4	30
5305-00-434-8882	19	13	5310-00-616-3555	3	4
1240-00-435-2565	4	45		10	3
5305-00-448-6456	9	1		15	10
5905-00-458-9500	20	5		16	2
1240-00-464-4792	2	16		17	3
	4	44	5330-00-618-3447	14	30
	9	8	5310-00-619-1148	2	36
	16	13	5315-00-620-3066	19	1
5340-00-486-0467	18	10	5340-00-622-4887	2	21
5305-00-488-6512	2	4	1240-00-622-4992	4	5
	7	22		11	12
	10	18		18	17
	14	31	1240-00-622-4998	3	21
	17	18	1240-00-626-1890	5	9
1240-00-489-8374	2	26	5330-00-629-1057	4	11
	2	26	5330-00-629-1065	4	10
	4	22	5330-00-631-4412	14	19
	9	3	5305-00-638-1198	12	8
	16	3	6145-00-652-1784	BULK	5
1240-00-489-8375	3	32	1240-00-654-6928	6	9

NATIONAL STOCK NUMBER AND PART NUMBER INDEX

NATIONAL STOCK NUMBER INDEX		NATIONAL STOCK NUMBER INDEX			
STOCK NUMBER	FIG.	ITEM	STOCK NUMBER	FIG.	ITEM
1240-00-675-1175	4	14	5340-00-794-7584	8	27
1240-00-675-1176	4	56	5315-00-802-1987	4	55
1240-00-675-1177	2	18	5305-00-803-8232	7	26
5315-00-682-1724	4	52		14	35
5940-00-682-2477	20	8	5315-00-806-7039	15	9
5330-00-684-2846	4	37	1240-00-819-9600	12	6
	10	6		19	14
5330-00-684-2847	5	3	5305-00-823-5728	4	12
5360-00-685-0837	6	1	5340-00-825-4826	11	7
	13	6		18	12
5365-00-685-5773	6	8	5315-00-826-8939	17	7
5905-00-689-1831	20	4	5970-00-833-9166	BULK	2
5305-00-717-6949	19	10	5315-00-847-3735	15	21
5305-00-717-6950	15	16	5315-00-847-5751	10	13
	19	2		17	13
5365-00-720-8064	3	20	5305-00-866-0449	2	31
5315-00-721-4995	4	46		3	24
	7	20	1240-00-872-0942	11	20
5315-00-721-7789	4	47	1240-00-878-7768	8	14
5365-00-721-8187	11	9	1240-00-889-6802	10	8
5315-00-722-2611	10	7		17	8
5305-00-724-5802	14	25	5305-00-899-5142	4	25
5305-00-724-5847	4	36	5340-00-902-0426	8	11
5305-00-724-6740	2	6	5365-00-903-7567	18	14
	7	9	1240-00-916-2214	2	18
5305-00-724-6785	9	13	1240-00-916-2216	12	11
	16	6	5355-00-916-2220	12	9
5305-00-727-8833	13	8	5355-00-916-2221	12	10
5305-00-728-2982	2	22	1240-00-916-7752	2	18
	3	29	1240-00-916-7845	1	3
1240-00-731-4986	4	54	5305-00-922-6286	8	20
5355-00-762-1489	8	18	1240-00-927-3391	6	9
	20	1	5310-00-928-2690	13	13
5305-00-763-6961	3	1	5310-00-929-6395	4	19
5305-00-763-6962	4	3		8	21
5305-00-763-6963	11	6	5310-00-933-8119	1	6
	15	20		2	24
	18	11		3	35
5305-00-764-0066	3	9		4	33
5305-00-764-0068	2	29		8	25
5305-00-764-2966	6	2	5930-00-937-9984	8	23
5305-00-765-4257	4	58	1240-00-938-3047	1	5
5305-00-770-2533	20	2	5305-00-940-9497	7	13
5305-00-770-2580	8	7		14	9
5305-00-774-9662	4	1	5305-00-941-6403	14	13
	11	10	1240-00-944-1700	3	14
	18	15	1240-00-947-6080	3	19
1240-00-781-9274	8	10	5330-00-949-3898	8	9
5310-00-782-1349	14	12	1240-00-954-4428	7	3
	15	3		14	3

NATIONAL STOCK NUMBER AND PART NUMBER INDEX

STOCK NUMBER	NATIONAL STOCK NUMBER INDEX		STOCK NUMBER	FIG.	ITEM
	FIG.	ITEM			
1240-00-955-0568	11	15	5340-01-048-5741	2	23
5305-00-959-0382	2	25	5330-01-052-9181	19	18
	4	18	5905-01-059-2503	20	6
1240-00-968-6111	4	23	1240-01-059-2576	15	7
5305-00-983-6650	3	34	1240-01-069-4544	4	20
1240-00-987-5070	8	8	5961-01-080-5811	15	14
1240-00-987-5072	3	18	1240-01-091-1425	14	10
5365-00-987-5073	3	23	5340-01-091-9659	15	2
1240-00-987-5074	3	30	5340-01-102-1666	14	18
5305-00-987-5075	3	17		15	5
5305-00-988-1167	6	6	1240-01-105-5607	7	17
5305-00-988-7603	1	7	5305-01-107-1920	12	5
5305-00-988-7613	7	28	9905-01-107-9143	1	2
	14	37	9905-01-107-9144	1	2
5330-00-989-4694	7	21	1240-01-108-1898	9	14
5330-00-989-4881	10	15		16	14
1240-00-989-4882	11	14	9905-01-109-7646	4	39
7690-00-989-5942	2	9	1240-01-122-9998	1	3
5330-00-989-6986	2	10	1240-01-123-0098	4	48
1240-00-989-6991	3	27	1290-01-123-0099	4	48
1240-00-990-6559	2	11	1240-01-123-0100	4	51
1240-00-990-7254	13	2	5330-01-124-2453	12	12
1240-00-990-8425	3	3	9905-01-124-2505	1	2
5365-00-990-8431	3	16	9905-01-124-2506	2	32
5330-00-990-8473	12	1	1240-01-130-2472	7	25
5330-00-990-8474	10	2	5340-01-145-4828	4	4
	17	2		11	5
5330-00-990-8980	7	10	1240-01-174-5570	19	6
1240-00-991-8428	10	23	9905-01-176-8755	2	32
1240-00-991-8434	11	2	9905-01-182-3473	2	32
5305-00-992-4535	12	2	6145-01-222-0230	BULK	3
1240-00-992-4549	10	14			
	17	14			
1240-00-995-8013	11	22			
1240-00-995-8015	11	18			
5305-00-995-8766	7	29			
	14	38			
1240-00-995-8768	2	20			
5310-01-006-3902	15	13			
1240-01-016-2269	14	34			
1240-01-016-2271	17	16			
1240-01-016-2274	3	30			
5330-01-016-2275	15	12			
1240-01-016-2279	15	22			
5935-01-016-2280	15	17			
1240-01-016-2281	1	5			
1240-01-021-9569	15	11			
1240-01-043-8208	15	19			
1240-01-047-3727	14	2			
5340-01-048-5740	3	36			

## NATIONAL STOCK NUMBER AND PART NUMBER INDEX

FSCM	PART NUMBER	PART NUMBER INDEX STOCK NUMBER	FIG.	ITEM
81349	MILE1-1049	5960-00-082-3326	7	18
96906	MS122158	5340-00-825-4826	11	7
			18	12
96906	MS15795-804	5310-00-782-1349	14	12
			15	3
96906	MS15795-808	5310-00-619-1148	2	36
96906	MS16555-604	5315-00-806-7039	15	9
96906	MS16555-618		14	4
96906	MS16555-627		14	29
			16	4
96906	MS16555-629	5315-00-847-5751	10	13
			17	13
96906	MS16555-640	5315-00-056-9386	2	7
			3	11
96906	MS16562-190	5315-00-847-3735	15	21
96906	MS16624-1018	5365-00-721-8187	11	9
96906	MS16624-1025	5365-00-720-8064	3	20
96906	MS16624-5018	5365-00-903-7567	18	14
96906	MS16624-5018-1	5365-00-432-3584	3	22
			4	7
96906	MS16625-4045	5365-00-990-8431	3	16
96906	MS16995-17	5305-00-959-0382	2	25
			4	18
96906	MS16995-27	5305-00-988-7603	1	7
96906	MS16995-49	5305-00-988-7613	7	28
			14	37
96906	MS16998-11	5305-00-983-6650	3	34
96906	MS18068-2	5305-00-097-8953	7	16
96906	MS25082C11	5310-01-006-3902	15	13
96906	MS25231-313	6240-00-155-8714	4	28
			10	16
96906	MS3212-23	5305-00-488-6512	2	4
			7	22
			10	18
			14	31
			17	18
96906	MS35206-204	5305-00-988-1167	6	6
96906	MS35275-208	5305-00-941-6403	14	13
96906	MS35275-228	5305-00-922-6286	8	20
96906	MS35333-69	5310-00-543-4652	10	9
			17	9
96906	MS35333-71	5310-00-616-3555	3	4
			10	3
			15	10
			16	2
			17	3
96906	MS35333-72	5310-00-543-2739	2	2
			16	8
96906	MS35333-73	5310-00-543-5933	2	37
			7	24
			14	33

## NATIONAL STOCK NUMBER AND PART NUMBER INDEX

FSCM	PART NUMBER	PART NUMBER INDEX		ITEM
		STOCK NUMBER	FIG.	
96906	MS35333-74	5310-00-543-2740	7	27
			14	36
96906	MS35335-57	5310-00-058-3599	7	7
			14	6
96906	MS35335-58	5310-00-209-1366	2	27
			3	35
			9	2
96906	MS35335-59	5310-00-596-7693	3	8
			9	11
			13	13
96906	MS35338-134	5310-00-928-2690	4	19
96906	MS35338-136	5310-00-929-6395	8	21
96906	MS35338-137	5310-00-933-8119	1	6
			2	24
			3	35
			4	33
			8	25
96906	MS35431-5	5940-00-271-7258	8	26
96906	MS51021-21	5305-00-531-0137	5	5
96906	MS51021-22	5305-00-576-7266	3	25
96906	MS51029-1	5305-00-638-1198	12	8
96906	MS51029-27	5305-00-995-8766	7	29
96906	MS51029-61	5305-00-724-5847	14	38
			4	36
96906	MS51029-9	5305-00-803-8232	7	26
96906	MS51031-15	5305-00-823-5728	14	35
			4	12
96906	MS51031-16	5305-00-527-5737	4	50
96906	MS51031-24	5305-00-582-9064	4	15
96906	MS51031-25	5305-00-866-0449	2	31
96906	MS51031-7	5305-00-068-1653	3	24
			4	13
96906	MS51038-26	5305-00-899-5142	4	25
96906	MS51045-20	5305-00-068-1655	8	4
96906	MS51045-49	5305-00-940-9497	7	13
96906	MS51377-2	2640-00-060-3543	14	9
			2	14
			4	42
			9	6
			16	11
96906	MS51607-1	1240-00-114-1096	2	17
			4	43
			9	5
			16	12
			8	11
96906	MS51938-6	5340-00-902-0426	4	40
96906	MS51957-11	5305-00-054-5644	14	28
96906	MS51957-12	5305-00-054-5646	1	1
			2	33
			7	12
96906	MS51957-13	5305-00-054-5647	7	8

## NATIONAL STOCK NUMBER AND PART NUMBER INDEX

FSCM	PART NUMBER	PART NUMBER INDEX		ITEM
		STOCK NUMBER	FIG.	
96906	MS51957-13	5305-00-054-5647	14	7
			14	11
96906	MS51957-14	5305-00-054-5648	15	1
96906	MS51957-27	5305-00-054-6651	2	28
96906	MS51957-28	5305-00-054-6652	4	21
			4	21
			8	19
			10	4
			15	8
96906	MS51957-30	5305-00-054-6654	17	4
			10	17
			17	17
96906	MS51957-31	5305-00-054-6655	3	5
96906	MS51957-31B	5305-00-448-6456	16	1
96906	MS51957-32	5305-00-054-6656	9	1
96906	MS51957-33	5305-00-054-6657	4	49
96906	MS51957-4	5305-00-054-5638	10	20
			17	20
			10	10
96906	MS51957-42	5305-00-054-6667	17	10
			3	31
			8	24
96906	MS51957-43	5305-00-054-6668	4	57
96906	MS51957-44	5305-00-054-6669	2	1
96906	MS51957-45	5305-00-054-6670	3	7
			9	10
			16	9
			2	5
			4	32
96906	MS51957-5	5305-00-054-5639	13	14
96906	MS51957-64	5305-00-050-9230	7	23
96906	MS51957-66	5305-00-050-9232	14	32
			2	35
			13	11
			3	34
			20	2
			8	7
			6	2
			3	1
			4	3
			11	6
			15	20
			18	11
			13	8
			4	58
			3	9
			2	29
			4	1
96906	MS51960-16	5305-00-774-9662	11	10
			18	15
			2	22
96906	MS51960-29	5305-00-728-2982	2	

## NATIONAL STOCK NUMBER AND PART NUMBER INDEX

FSCM	PART NUMBER	PART NUMBER INDEX		ITEM
		STOCK NUMBER	FIG.	
96906	MS51960-29	5305-00-728-2982	3	29
96906	MS51963-10	5305-00-717-6949	19	10
96906	MS51963-9	5305-00-717-6950	15	16
			19	2
96906	MS51964-29	5305-00-724-5802	14	25
96906	MS51965-17	5305-00-724-6740	2	6
			7	9
96906	MS51965-31	5305-00-724-6785	9	13
			16	6
96906	MS51973-8	5305-00-051-4483	10	22
			17	22
96906	MS77068-1	5940-00-682-2477	20	8
96906	MS9021-008	5330-00-618-3447	14	30
96906	MS9021-030	5330-00-551-8252	15	6
96906	MS9021-038	5330-00-060-0602	14	23
			19	4
96906	MS9021-114	5330-00-580-2275	17	6
96906	MS9021-116	5330-00-582-7484	17	15
96906	MS9021-238	5330-00-580-9763	14	8
96906	MS9105-01		11	4
			18	9
96906	MS9105-28	5315-00-802-1987	4	55
96906	MS9105-30		7	5
96906	MS9105-32	5315-00-682-1724	4	52
96906	MS9105-36	5315-00-721-7789	4	47
96906	MS9105-53	5315-00-826-8939	17	7
96906	MS9105-55	5315-00-722-2611	10	7
96906	MS9105-57	5315-00-721-4995	4	46
			7	20
96906	MS9105-58		9	4
96906	MS91528-0E1B	5355-00-762-1489	8	18
			20	1
96906	MS9380-10	5340-00-400-2584	2	19
80058	MX9644UV	5855-00-138-2386	14	26
81349	M16878/1BFE9		20	9
		6145-00-652-1784	BULK	5
81349	M16878/4BFEO		8	28
		6145-00-062-6683	BULK	4
81349	M16878/4BGE9		4	24
		6145-01-222-0230	BULK	3
81349	M23053/5-104-9		8	29
		5970-00-088-2975	BULK	1
81349	M5501-7F12		15	18
81349	M7444-1-1-16		8	3
		5970-00-833-9166	BULK	2
81349	RCR05G102JS	5905-00-458-9500	20	5
81349	RCR07G474JS	5905-00-105-7767	20	10
81349	RP062SB100KK	5905-00-689-1831	20	4
81349	SE20XD01	5940-00-082-4652	20	11
19200	10514223		2	3
19200	10514230		3	6



## NATIONAL STOCK NUMBER AND PART NUMBER INDEX

FSCM	PART NUMBER	PART NUMBER INDEX STOCK NUMBER	FIG.	ITEM
19200	10514234	5305-00-992-4535	12	2
19200	10514236		3	12
19200	10514238		3	33
19200	10514239		3	2
19200	10514240	1240-00-987-5072	3	18
19200	10514241	5365-00-088-8890	2	12
19200	10514242		3	28
19200	10514243	1240-00-944-1700	3	14
19200	10514252	5305-00-987-5075	3	17
19200	10514254	1240-00-990-6559	2	11
19200	10514254-1	1240-00-109-4451	2	11
19200	10514254-2	1240-00-415-6319	2	11
19200	10514255	1240-00-990-8425	3	3
19200	10514256	1240-00-995-8768	2	20
19200	10514257	1240-00-989-6991	3	27
19200	10514258	1240-00-987-5074	3	30
19200	10514259	5330-00-989-6986	2	10
19207	10514265	5365-00-987-5073	3	23
19200	10514266	5340-00-127-3006	2	8
19200	10514267	1240-00-947-6080	3	19
19200	10514272	1240-00-954-4428	7	3
			14	3
19200	10514282	1240-00-991-8434	11	2
19200	10514283	1240-00-987-5070	8	8
19200	10514295	1240-00-990-7254	13	2
19200	10514301	5330-01-124-2453	12	12
19200	10514302	5330-00-990-8473	12	1
19200	10514314	5310-00-125-3943	12	7
19200	10514317		12	4
19200	10514330		13	7
19200	10514353	5330-00-990-8474	10	2
			17	2
19200	10514576		9	12
			16	7
19200	10514579	5330-00-990-8980	7	10
19200	10514581	1240-00-117-2766	7	1
			14	1
19200	10514583	5365-00-088-8865	11	1
			18	1
19200	10515845		12	13
19200	10515991	1240-00-992-4549	10	14
			17	14
19200	10516007		10	19
19200	10516158	1240-00-077-1688	8	17
19200	10516206	5935-00-077-1686	8	2
19200	10516207	5310-00-068-3260	8	12
19200	10516212		8	16
19200	10516217		8	6
19200	10516219		8	22
19200	10516232	1240-00-115-4514	4	38
19200	10516251	5330-00-068-3257	4	9

## NATIONAL STOCK NUMBER AND PART NUMBER INDEX

FSCM	PART NUMBER	PART NUMBER INDEX	
		STOCK NUMBER	FIG. ITEM
19200	10516366	1240-01-123-0098	4 48
19200	10516367	1240-00-116-0613	4 45
19200	10516384	1240-00-116-7015	4 38
19200	10516567	1240-00-464-4792	2 16
			4 44
			9 8
			16 13
19200	10516576	1240-00-938-3047	1 5
19200	10516592	5930-00-937-9984	8 23
19200	10516714		12 3
19200	10516721	5355-00-916-2221	12 10
19200	10516722	5355-00-916-2220	12 9
19200	10516732	1240-00-916-2216	12 11
19200	10516734	1240-01-105-5607	7 17
19200	10516832	1240-00-927-3391	6 9
19200	10524948	1240-00-059-5835	3 13
19200	10524951		2 34
19200	10541760	5305-01-107-1920	12 5
19200	10541930	1240-00-130-5584	7 15
19200	10541952	1240-00-130-5585	7 14
19200	10541984	1240-00-731-4986	4 54
19200	10541985		6 7
19200	10541990	1240-00-916-7845	1 3
19200	10541991		3 26
19200	10541994	1240-00-916-7752	2 18
19200	10542005	5330-00-949-3898	8 9
19200	10548202	1240-01-130-2472	7 25
19200	10548309	1240-00-391-8404	7 6
			14 5
19200	10548312		11 16
19200	10549636	6250-00-111-6736	4 26
19200	10553449	1240-00-878-7768	8 14
19200	10554535		7 2
		1240-01-047-3727	14 2
19200	10554536	1240-00-889-6802	10 8
			17 8
19200	10554963		18 7
19200	10555157-14	5305-00-524-0709	4 35
19200	10556506		8 15
19200	10556516	5340-00-794-7584	8 27
19200	10556517		11 19
19200	10556523	9905-01-107-9143	1 2
19200	10556524		1 2
19200	11727032		9 9
19200	11727073-1	1240-00-489-8374	2 26
			2 26
			4 22
			9 3
			16 3
19200	11727073-2	1240-00-489-8375	3 32
19200	11727076		4 53

## NATIONAL STOCK NUMBER AND PART NUMBER INDEX

FSCM	PART NUMBER	PART NUMBER INDEX	
		STOCK NUMBER	FIG. ITEM
19200	11727131	1240-00-179-1384	7 19
19200	11727319	1240-00-406-1581	7 4
19200	11727407		4 39
19200	11727408	9905-01-182-3473	2 32
19200	11727413	1240-00-391-8412	10 12
			17 12
19200	11727414	1240-00-391-8420	10 5
			17 5
19200	11727418		13 12
19200	11727426	1240-00-394-3108	10 21
			17 21
19200	11727431		4 34
19200	11727469		4 8
19200	11727470	5340-01-048-5741	2 23
19200	11727471	1240-01-069-4544	4 20
19200	11727472	5340-01-048-5740	3 36
19200	11727486	1240-00-148-7556	1 3
19200	11727487	9905-01-176-8755	2 32
19200	11727607	1240-00-242-5701	8 13
19200	11729247		17 19
19200	11729248	5340-00-486-0467	18 10
19200	11731144-5	5330-01-052-9181	19 18
19200	11731144-6	5330-00-631-4412	14 19
19200	11731239	5305-00-434-8882	19 13
19200	11733401	1240-00-148-7555	1 4
19200	11733402	1240-00-393-0446	14 22
19200	11733403	1240-01-016-2269	14 34
19200	11733404	1240-00-393-0271	18 2
19200	11733406	1240-00-393-0281	18 4
19200	11733407	1240-00-393-0312	18 6
19200	11733410	1240-00-393-0447	15 4
19200	11733412		18 3
19200	11733413		18 5
19200	11733414	1240-00-393-0338	18 8
19200	11733417		18 18
19200	11733418	1240-00-393-0413	14 16
19200	11733419	1240-00-393-0417	19 19
19200	11733420	1240-00-393-0437	19 20
19200	11733421	1240-00-393-0439	19 21
19200	11733423	5315-00-620-3066	19 1
19200	11733424		19 16
19200	11733425		19 5
19200	11733426		19 17
19200	11733427		19 3
19200	11733428		19 9
19200	11733429	1240-00-393-0441	19 12
19200	11733430		19 8
19200	11733431		19 15
19200	11733432		19 7
19200	11733433	1240-01-174-5570	19 6
19200	11733434		19 11

## NATIONAL STOCK NUMBER AND PART NUMBER INDEX

FSCM	PART NUMBER	PART NUMBER INDEX	
		STOCK NUMBER	FIG. ITEM
19200	11733436		14 20
19200	11733437		14 24
19200	11733438	1240-00-393-0442	14 21
19200	11733454		16 5
19200	11733455		14 27
19200	11733456		14 17
19200	11733457	1240-00-393-0319	14 14
19200	11733470	5940-00-565-0072	20 7
19200	11733474	1240-00-393-0327	14 15
19200	11733480	1240-01-091-1425	14 10
19200	11733484	1240-01-059-2576	15 7
19200	11733493	5935-01-016-2280	15 17
19200	11733495	5961-01-080-5811	15 14
19200	11733497		17 23
19200	11733499	1240-01-016-2279	15 22
19200	11737597	5310-00-096-9728	2 15
19200	11743799		7 11
19200	11743800	1240-00-602-5084	1 4
19200	11747171	1240-01-043-8208	15 19
19200	11747182	1240-01-021-9569	15 11
19200	11747183		20 3
19200	11747184	5330-01-016-2275	15 12
19200	11747185	5905-01-059-2503	20 6
19200	11747186	1240-01-016-2271	17 16
19200	11747189		15 15
19200	11747304		3 26
19200	11747322	1240-01-016-2274	3 30
19200	11747350	1240-01-016-2281	1 5
19200	11747351	9905-01-109-7646	4 39
19200	11747352	9905-01-107-9144	1 2
19200	11747439	1240-01-122-9998	1 3
19200	11747442		3 26
19200	11747444	9905-01-124-2506	2 32
19200	11747446	9905-01-124-2505	1 2
21450	503916	5305-00-582-9063	5 8
21450	540969	5305-00-282-7663	5 6
19200	7652132	5330-00-291-5787	4 27
19200	7659182	5365-00-200-5512	4 31
19207	7659444		3 10
19200	7694537	7690-00-989-5942	2 9
19200	8200055		2 13
			4 41
			9 7
			16 10
19200	8205653	5330-00-684-2846	4 37
			10 6
19200	8213364	1240-00-995-8013	11 22
19200	8213365	1240-00-872-0942	11 20
19200	8213366	1240-00-995-8015	11 18
19200	8213367	1240-00-955-0568	11 15
19200	8213373		11 13

## NATIONAL STOCK NUMBER AND PART NUMBER INDEX

FSCM	PART NUMBER	PART NUMBER INDEX	
		STOCK NUMBER	FIG. ITEM
19200	8213375		11 21
19200	8213376		11 3
19200	8213379		11 17
19200	8213390	1240-01-108-1898	9 14
			16 14
19200	8213392		10 1
			17 1
19200	8215854	5340-01-091-9659	15 2
19200	8215854-1	5340-01-102-1666	14 18
			15 5
19200	8237663	5935-00-604-7866	4 29
19200	8289187	1240-00-675-1177	2 18
19200	8289187-1	1240-00-916-2214	2 18
19200	8289190	5340-00-622-4887	2 21
19200	8289217	1240-01-123-0100	4 51
19200	8289218	1290-01-123-0099	4 48
19200	8289221	1240-00-675-1176	4 56
19200	8289223		6 4
19200	8289224		5 2
19200	8289225		5 4
19200	8289226	1240-00-435-2565	4 45
19200	8289229	1240-00-654-6928	6 9
19200	8289231		6 11
19200	8289232		6 10
19200	8289234	1240-00-968-6111	4 23
19200	8289238	1240-00-121-0796	5 1
19200	8289239	5330-00-684-2847	5 3
19200	8289251	5365-00-685-5773	6 8
19200	8289252		6 3
19200	8289253		6 5
19200	8289256	5360-00-685-0837	6 1
			13 6
19200	8289266	1240-00-626-1890	5 9
19200	8289272		5 5
19200	8289274	5355-00-584-4133	5 10
19200	8289278	1240-00-675-1175	4 14
19200	8289280		4 16
19200	8289282	5315-00-086-3393	4 2
			11 8
			18 13
19200	8289283		4 17
19200	8289294		5 7
19200	8289302	1240-00-622-4992	4 5
			11 12
			18 17
19200	8289303	5360-00-584-1395	4 6
			11 11
			18 16
19200	8289305	5340-01-145-4828	4 4
			11 5
19200	8289306	5330-00-629-1065	4 10

## NATIONAL STOCK NUMBER AND PART NUMBER INDEX

FSCM	PART NUMBER	PART NUMBER INDEX	
		STOCK NUMBER	FIG. ITEM
19200	8289308	5330-00-629-1057	4 11
19204	8289335	5935-00-611-6495	4 30
19200	8298412	5305-00-584-4852	3 15
19200	8298419	1240-00-622-4998	3 21
19200	8298424		2 30
19200	8565572	5310-00-128-7284	12 14
19200	8589920-1	1240-00-781-9274	8 10
19200	8619436		13 10
19200	8619438		13 9
19200	8619440		13 3
19200	8619444		13 5
19200	8619445		13 1
19200	8619446		13 4
19200	8620033		10 11
			17 11
19200	8620049	5340-00-068-1656	8 1
19200	8620836	1240-00-819-9600	12 6
			19 14
19200	8621038	5330-00-989-4881	10 15
19200	8621144	5330-00-989-4694	7 21
19200	8635152	1240-00-991-8428	10 23
19200	8635182	1240-00-989-4882	11 14

By Order of the Secretary of the Army:

JOHN A. WICKHAM, JR.  
*General, United States Army*  
*Chief of Staff*

Official:

R. L. DILWORTH  
*Brigadier General, United States Army*  
*The Adjutant General*

**DISTRIBUTION:**

To be distributed in accordance with DA Form 12-41, Direct and General Support Maintenance requirements for Periscope, Tank M32, M32C, M35 and Periscope, Tank M32E1.





RECOMMENDED CHANGES TO EQUIPMENT TECHNICAL PUBLICATIONS



THEN... JOT DOWN THE DOPE ABOUT IT ON THIS FORM, CAREFULLY TEAR IT OUT, FOLD IT AND DROP IT IN THE MAIL!

SOMETHING WRONG WITH THIS PUBLICATION?

FROM: (PRINT YOUR UNIT'S COMPLETE ADDRESS)

Your mailing address

DATE SENT

PUBLICATION NUMBER

TM 9-1240-379-34P

PUBLICATION DATE

Date of TM

PUBLICATION TITLE

Tank Periscope RPSTL  
M32, M32C, M32E1, M32CE1

BE EXACT... PIN-POINT WHERE IT IS

PAGE NO.	PARA-GRAPH	FIGURE NO.	TABLE NO.
1		4	

IN THIS SPACE TELL WHAT IS WRONG AND WHAT SHOULD BE DONE ABOUT IT:

Change TM number from TM 9-1240-329-34P to TM 9-1240-379-34P.

Figure title. Change P/N of Optical Cell Assembly from 8289878 to 8289278.

SAMPLE

PRINTED NAME, GRADE OR TITLE, AND TELEPHONE NUMBER

John Smith, S.SGT

793/xxxx

SIGN HERE:

DA FORM 2028-2  
1 JUL 79

PREVIOUS EDITIONS ARE OBSOLETE.

P.S.--IF YOUR OUTFIT WANTS TO KNOW ABOUT YOUR RECOMMENDATION MAKE A CARBON COPY OF THIS AND GIVE IT TO YOUR HEADQUARTERS.



RECOMMENDED CHANGES TO EQUIPMENT TECHNICAL PUBLICATIONS



THEN... JOT DOWN THE DOPE ABOUT IT ON THIS FORM, CAREFULLY TEAR IT OUT, FOLD IT AND DROP IT IN THE MAIL!

**SOMETHING WRONG WITH THIS PUBLICATION?**

FROM: (PRINT YOUR UNIT'S COMPLETE ADDRESS)

DATE SENT

PUBLICATION NUMBER

TM 9-1240-379-34P

PUBLICATION DATE

18 Sep 86

PUBLICATION TITLE

TANK PERISCOPE RPSTL M32, M32C, M32E1, M32CE1

BE EXACT... PIN-POINT WHERE IT IS

PAGE NO.

PARA-GRAPH

FIGURE NO.

TABLE NO.

IN THIS SPACE TELL WHAT IS WRONG AND WHAT SHOULD BE DONE ABOUT IT:

PRINTED NAME, GRADE OR TITLE, AND TELEPHONE NUMBER

SIGN HERE:

FILL IN YOUR  
UNIT'S ADDRESS

FOLD BACK

TEAR ALONG PERFORATED LINE

DEPARTMENT OF THE ARMY



OFFICIAL BUSINESS  
PENALTY FOR PRIVATE USE, \$300

NO POSTAGE  
NECESSARY  
IF MAILED  
IN THE  
UNITED STATES

**BUSINESS REPLY MAIL**

FIRST CLASS

PERMIT NO. 12062

WASHINGTON, DC

POSTAGE WILL BE PAID BY DEPARTMENT OF THE ARMY



**COMMANDER  
US ARMY ARMAMENT, MUNITIONS  
AND CHEMICAL COMMAND  
ATTN: AMSMC-MAS  
ROCK ISLAND, IL 61201-9990**

RECOMMENDED CHANGES TO EQUIPMENT TECHNICAL PUBLICATIONS



THEN... JOT DOWN THE DOPE ABOUT IT ON THIS FORM, CAREFULLY TEAR IT OUT. FOLD IT AND DROP IT IN THE MAIL!

# SOMETHING WRONG WITH THIS PUBLICATION?

FROM: (PRINT YOUR UNIT'S COMPLETE ADDRESS)

DATE SENT

PUBLICATION NUMBER

TM 9-1240-379-34P

PUBLICATION DATE

18 Sep 86

PUBLICATION TITLE

TANK PERISCOPE RPSTL M32, M32C, M32E1, M32CE1

BE EXACT... PIN-POINT WHERE IT IS

PAGE NO.

PARA-GRAPH

FIGURE NO.

TABLE NO.

IN THIS SPACE TELL WHAT IS WRONG AND WHAT SHOULD BE DONE ABOUT IT:

PRINTED NAME, GRADE OR TITLE, AND TELEPHONE NUMBER

SIGN HERE:

FILL IN YOUR  
UNIT'S ADDRESS

FOLD BACK

DEPARTMENT OF THE ARMY



OFFICIAL BUSINESS  
PENALTY FOR PRIVATE USE, \$300

NO POSTAGE  
NECESSARY  
IF MAILED  
IN THE  
UNITED STATES

**BUSINESS REPLY MAIL**

FIRST CLASS

PERMIT NO. 12062

WASHINGTON, DC

POSTAGE WILL BE PAID BY DEPARTMENT OF THE ARMY



**COMMANDER  
US ARMY ARMAMENT, MUNITIONS  
AND CHEMICAL COMMAND  
ATTN: AMSMC-MAS  
ROCK ISLAND, IL 61201-9990**

TEAR ALONG PERFORATED LINE

**RECOMMENDED CHANGES TO EQUIPMENT TECHNICAL PUBLICATIONS**



## SOMETHING WRONG WITH THIS PUBLICATION?

*THEN... JOT DOWN THE DOPE ABOUT IT ON THIS FORM, CAREFULLY TEAR IT OUT, FOLD IT AND DROP IT IN THE MAIL!*

FROM: (PRINT YOUR UNIT'S COMPLETE ADDRESS)

DATE SENT

PUBLICATION NUMBER

TM 9-1240-379-34P

PUBLICATION DATE

18 Sep 86

PUBLICATION TITLE

TANK PERISCOPE RPSTL M32,  
M32C, M32E1, M32CE1

BE EXACT... PIN-POINT WHERE IT IS

PAGE NO.

PARA-GRAPH

FIGURE NO.

TABLE NO.

IN THIS SPACE TELL WHAT IS WRONG AND WHAT SHOULD BE DONE ABOUT IT:

PRINTED NAME, GRADE OR TITLE, AND TELEPHONE NUMBER

SIGN HERE:

**DA FORM 2028-2**  
1 JUL 79

PREVIOUS EDITIONS ARE OBSOLETE.

P.S.--IF YOUR OUTFIT WANTS TO KNOW ABOUT YOUR RECOMMENDATION MAKE A CARBON COPY OF THIS AND GIVE IT TO YOUR HEADQUARTERS.

FILL IN YOUR  
UNIT'S ADDRESS



FOLD BACK

DEPARTMENT OF THE ARMY



OFFICIAL BUSINESS  
PENALTY FOR PRIVATE USE, \$300

NO POSTAGE  
NECESSARY  
IF MAILED  
IN THE  
UNITED STATES

**BUSINESS REPLY MAIL**

FIRST CLASS

PERMIT NO. 12062

WASHINGTON, DC

POSTAGE WILL BE PAID BY DEPARTMENT OF THE ARMY



COMMANDER  
US ARMY ARMAMENT, MUNITIONS  
AND CHEMICAL COMMAND  
ATTN: AMSMC-MAS  
ROCK ISLAND, IL 61201-9990

TEAR ALONG PERFORATED LINE



## THE METRIC SYSTEM AND EQUIVALENTS

### LINEAR MEASURE

1 Centimeter = 10 Millimeters = 0.01 Meters = 0.3937 Inches  
 1 Meter = 100 Centimeters = 1000 Millimeters = 39.37 Inches  
 1 Kilometer = 1000 Meters = 0.621 Miles

### SQUARE MEASURE

1 Sq Centimeter = 100 Sq Millimeters = 0.155 Sq Inches  
 1 Sq Meter = 10,000 Sq Centimeters = 10.76 Sq Feet  
 1 Sq Kilometer = 1,000,000 Sq Meters = 0.386 Sq Miles

### WEIGHTS

1 Gram = 0.001 Kilograms = 1000 Milligrams = 0.035 Ounces  
 1 Kilogram = 1000 Grams = 2.2 Lb  
 1 Metric Ton = 1000 Kilograms = 1 Megagram = 1.1 Short Tons

### CUBIC MEASURE

1 Cu Centimeter = 1000 Cu Millimeters = 0.06 Cu Inches  
 1 Cu Meter = 1,000,000 Cu Centimeters = 35.31 Cu Feet

### LIQUID MEASURE

1 Milliliter = 0.001 Liters = 0.0338 Fluid Ounces  
 1 Liter = 1000 Milliliters = 33.82 Fluid Ounces

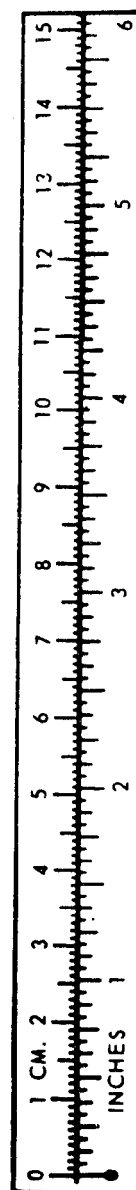
### TEMPERATURE

$5/9 (^{\circ}\text{F} - 32) = ^{\circ}\text{C}$   
 212<sup>o</sup> Fahrenheit is equivalent to 100<sup>o</sup> Celsius  
 90<sup>o</sup> Fahrenheit is equivalent to 32.2<sup>o</sup> Celsius  
 32<sup>o</sup> Fahrenheit is equivalent to 0<sup>o</sup> Celsius  
 $9/5 \text{ C}^{\circ} + 32 = \text{F}^{\circ}$

### APPROXIMATE CONVERSION FACTORS

<u>TO CHANGE</u>	<u>TO</u>	<u>MULTIPLY BY</u>
Inches . . . . .	Centimeters . . . . .	2.540
Feet . . . . .	Meters . . . . .	0.305
Yards . . . . .	Meters . . . . .	0.914
Miles . . . . .	Kilometers . . . . .	1.609
Square Inches . . . . .	Square Centimeters . . . . .	6.451
Square Feet . . . . .	Square Meters . . . . .	0.093
Square Yards . . . . .	Square Meters . . . . .	0.836
Square Miles . . . . .	Square Kilometers . . . . .	2.590
Acres . . . . .	Square Hectometers . . . . .	0.405
Cubic Feet . . . . .	Cubic Meters . . . . .	0.028
Cubic Yards . . . . .	Cubic Meters . . . . .	0.765
Fluid Ounces . . . . .	Milliliters . . . . .	29.573
Pints . . . . .	Liters . . . . .	0.473
Quarts . . . . .	Liters . . . . .	0.946
Gallons . . . . .	Liters . . . . .	3.785
Ounces . . . . .	Grams . . . . .	28.349
Pounds . . . . .	Kilograms . . . . .	0.454
Short Tons . . . . .	Metric Tons . . . . .	0.907
Pound-Feet . . . . .	Newton-Meters . . . . .	1.356
Pounds per Square Inch . . . . .	Kilopascals . . . . .	6.895
Miles per Gallon . . . . .	Kilometers per Liter . . . . .	0.425
Miles per Hour . . . . .	Kilometers per Hour . . . . .	1.609

<u>TO CHANGE</u>	<u>TO</u>	<u>MULTIPLY BY</u>
Centimeters . . . . .	Inches . . . . .	0.394
Meters . . . . .	Feet . . . . .	3.280
Meters . . . . .	Yards . . . . .	1.094
Kilometers . . . . .	Miles . . . . .	0.621
Square Centimeters . . . . .	Square Inches . . . . .	0.155
Square Meters . . . . .	Square Feet . . . . .	10.764
Square Meters . . . . .	Square Yards . . . . .	1.196
Square Kilometers . . . . .	Square Miles . . . . .	0.386
Square Hectometers . . . . .	Acres . . . . .	2.471
Cubic Meters . . . . .	Cubic Feet . . . . .	35.315
Cubic Meters . . . . .	Cubic Yards . . . . .	1.308
Milliliters . . . . .	Fluid Ounces . . . . .	0.034
Liters . . . . .	Pints . . . . .	2.113
Liters . . . . .	Quarts . . . . .	1.057
Liters . . . . .	Gallons . . . . .	0.264
Grams . . . . .	Ounces . . . . .	0.035
Kilograms . . . . .	Pounds . . . . .	2.205
Metric Tons . . . . .	Short Tons . . . . .	1.102
Newton-Meters . . . . .	Pound-Feet . . . . .	0.738
Kilopascals . . . . .	Pounds per Square Inch . . . . .	0.145
Kilometers per Liter . . . . .	Miles per Gallon . . . . .	2.354
Kilometers per Hour . . . . .	Miles per Hour . . . . .	0.621



TA089991

MRSA LIBRARY COPY